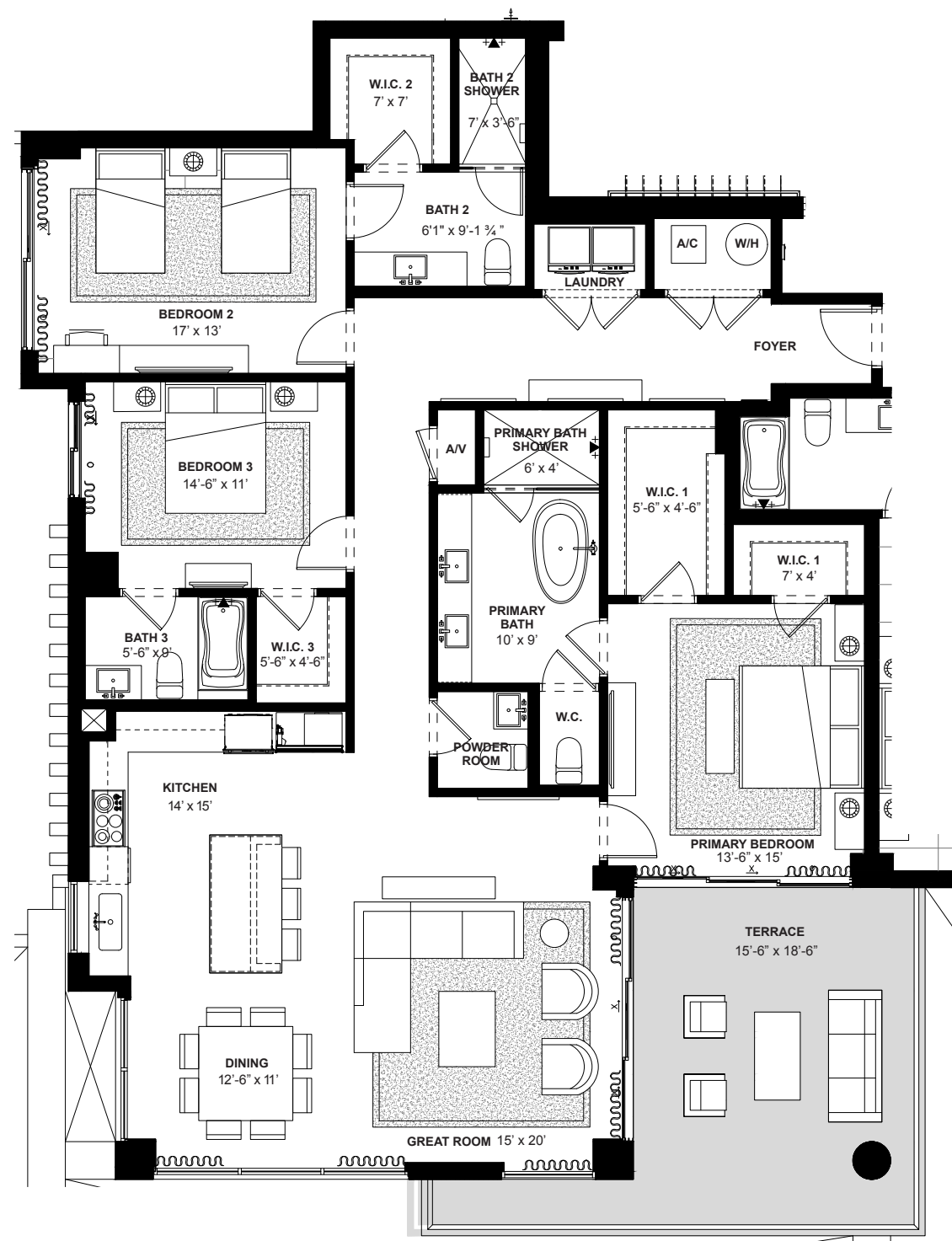
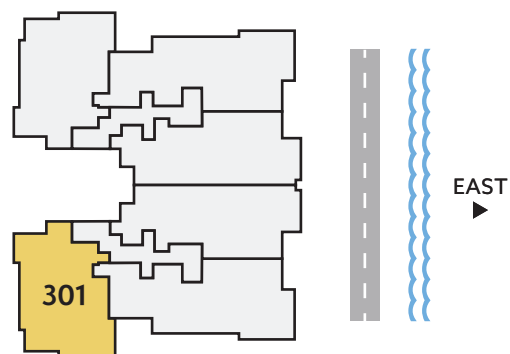


Residence 301



THIRD FLOOR



**SOUTH/
WEST**
DIRECTION

3
BEDROOMS

3.5
BATHS

2,106
A/C LIVING
AREA

320
COVERED
TERRACES

2,426
TOTAL S.F.

Artist's conceptual illustration only. Subject to modification.

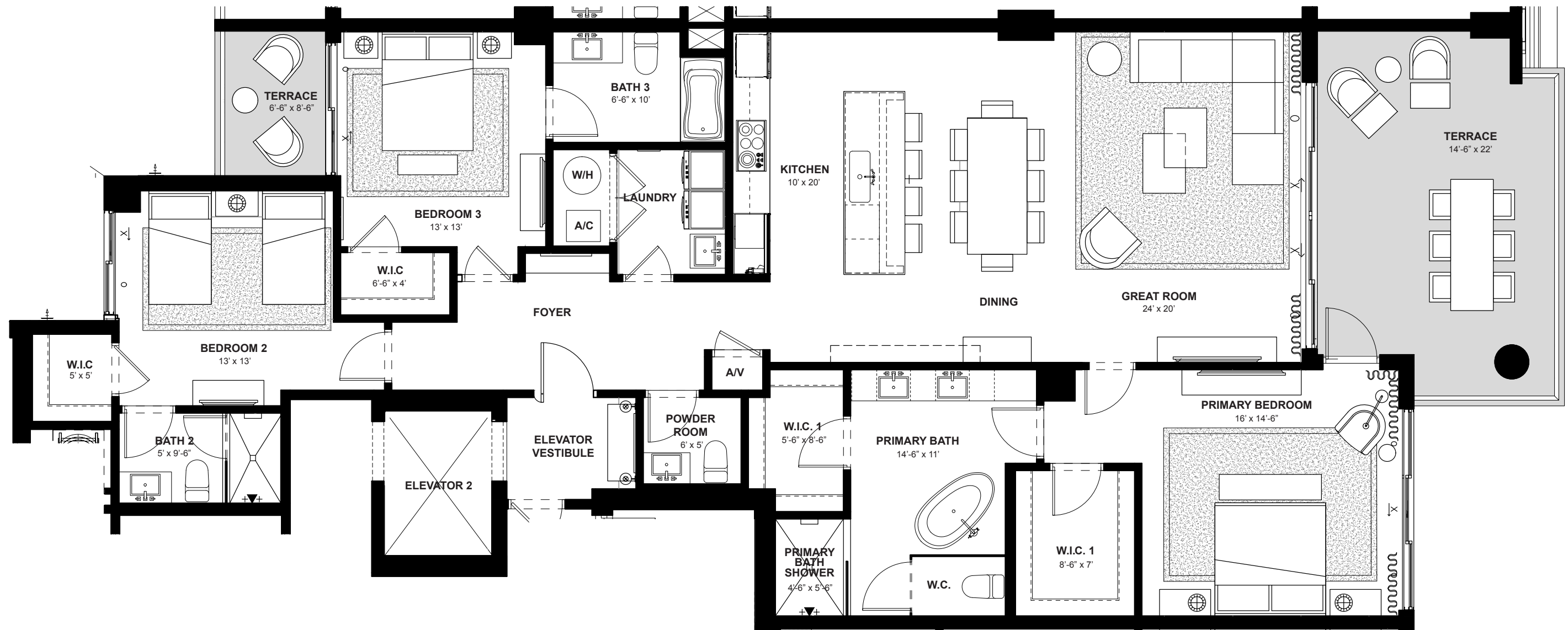


ORAL REPRESENTATIONS CANNOT BE RELIED UPON AS CORRECTLY STATING REPRESENTATIONS OF THE SELLER. FOR CORRECT REPRESENTATIONS, MAKE REFERENCE TO THIS BROCHURE AND TO THE DOCUMENTS REQUIRED BY SECTION 718.503, FLORIDA STATUTES TO BE FURNISHED BY A SELLER TO A BUYER OR LESSEE.

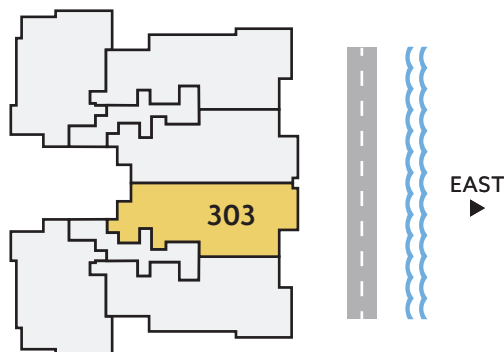
All dimensions, features, and specifications are approximate and subject to change without notice. Square footage listed above represents marketing square footage (please refer to section 3.2 of the Declaration and Exhibit 5 for more information). Brokers warmly welcomed.

SALATO
POMPANO BEACH

Residence 303




THIRD FLOOR



EAST DIRECTION	3 BEDROOMS	3.5 BATHS	2,132 A/C LIVING AREA	358 COVERED TERRACES	2,490 TOTAL S.F.
--------------------------	----------------------	---------------------	------------------------------------	-----------------------------------	----------------------------

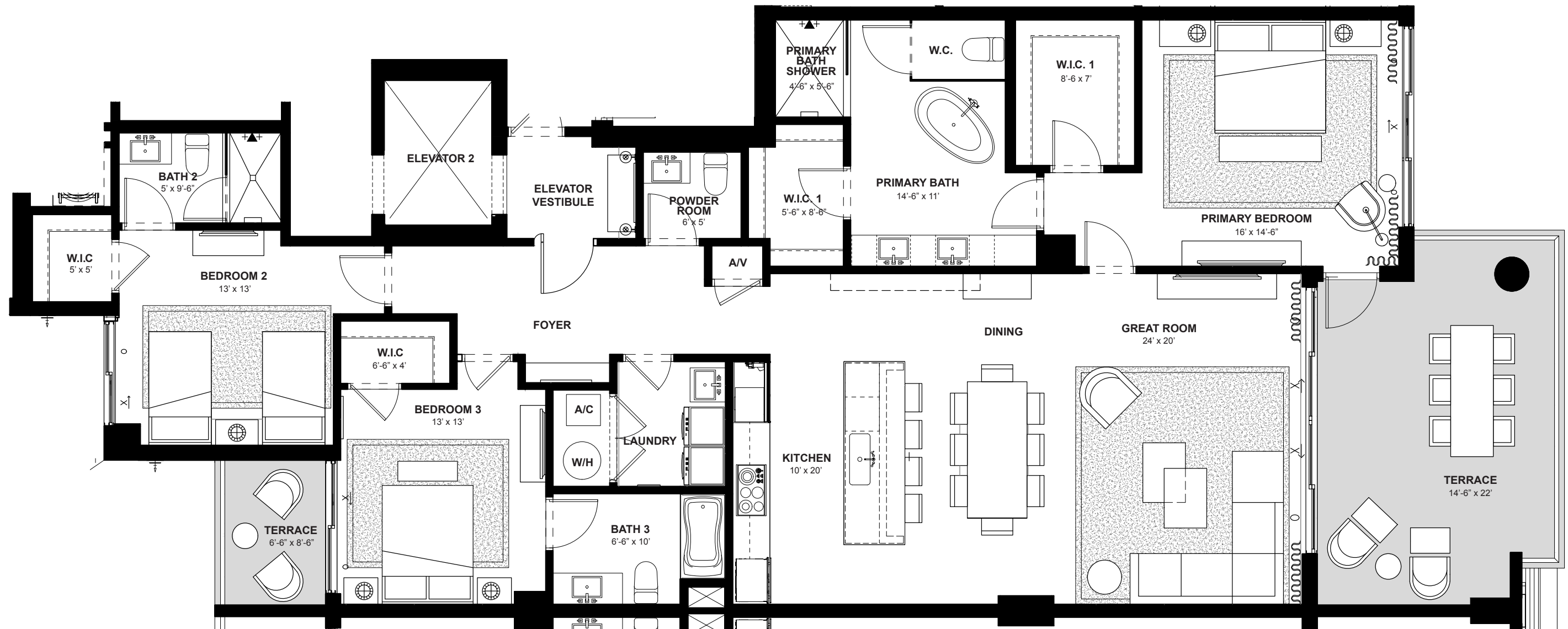
Artist's conceptual illustration only. Subject to modification.

 ORAL REPRESENTATIONS CANNOT BE RELIED UPON AS CORRECTLY STATING REPRESENTATIONS OF THE SELLER. FOR CORRECT REPRESENTATIONS, MAKE REFERENCE TO THIS BROCHURE AND TO THE DOCUMENTS REQUIRED BY SECTION 718.503, FLORIDA STATUTES TO BE FURNISHED BY A SELLER TO A BUYER OR LESSEE.

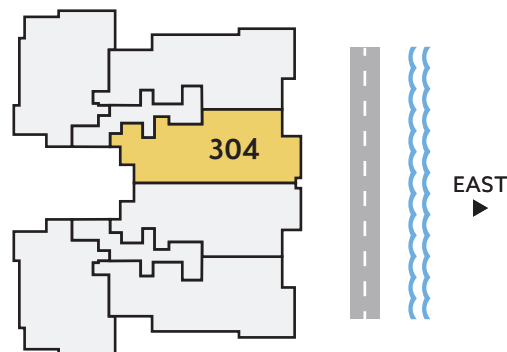
All dimensions, features, and specifications are approximate and subject to change without notice. Square footage listed above represents marketing square footage (please refer to section 3.2 of the Declaration and Exhibit 5 for more information). Brokers warmly welcomed.

SALATO
POMPANO BEACH

Residence 304




THIRD FLOOR



EAST DIRECTION	3 BEDROOMS	3.5 BATHS	2,132 A/C LIVING AREA	358 COVERED TERRACES	2,490 TOTAL S.F.
--------------------------	----------------------	---------------------	------------------------------------	-----------------------------------	----------------------------

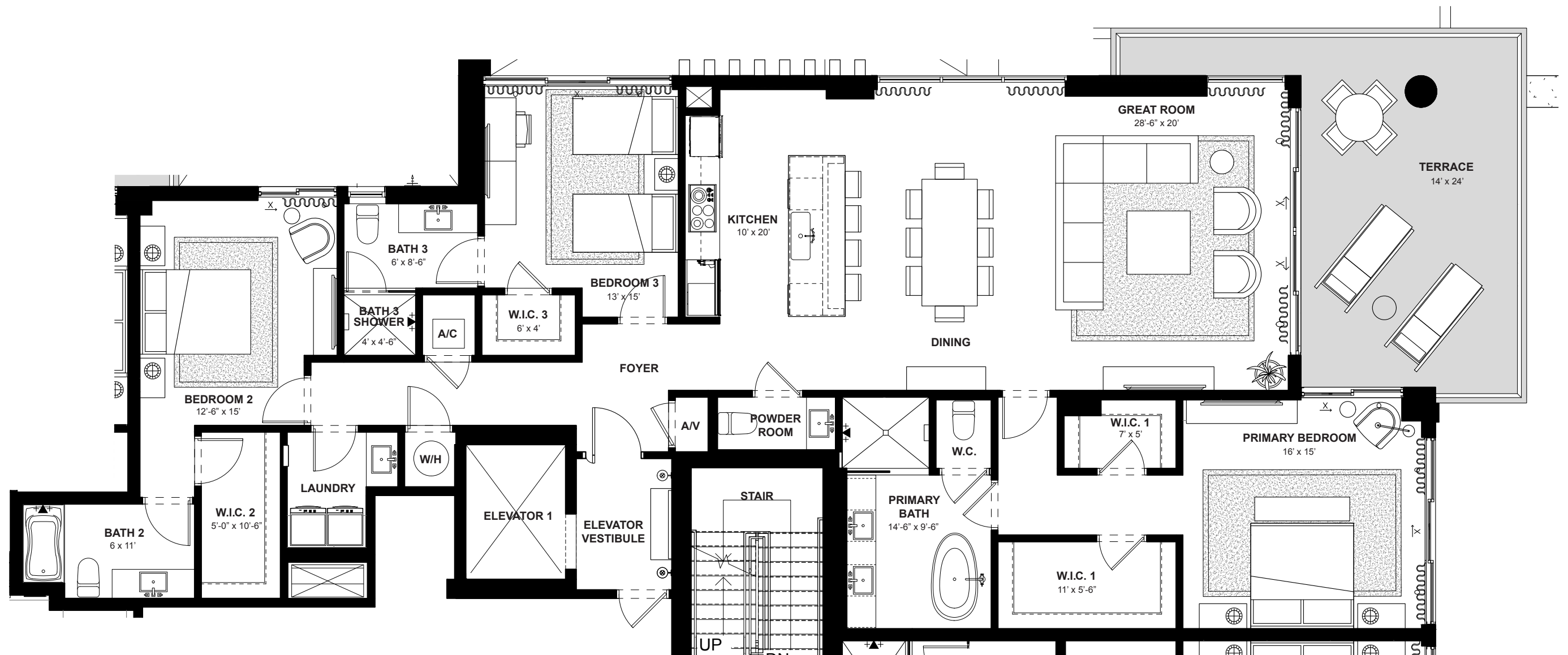
Artist's conceptual illustration only. Subject to modification.

 ORAL REPRESENTATIONS CANNOT BE RELIED UPON AS CORRECTLY STATING REPRESENTATIONS OF THE SELLER. FOR CORRECT REPRESENTATIONS, MAKE REFERENCE TO THIS BROCHURE AND TO THE DOCUMENTS REQUIRED BY SECTION 718.503, FLORIDA STATUTES TO BE FURNISHED BY A SELLER TO A BUYER OR LESSEE.

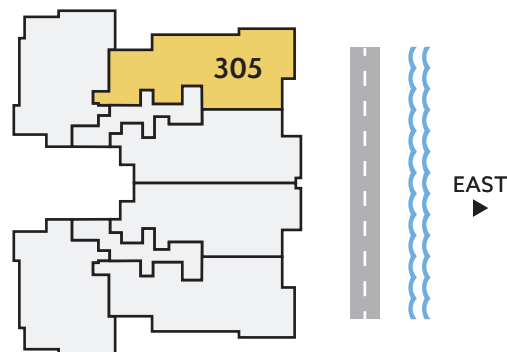
All dimensions, features, and specifications are approximate and subject to change without notice. Square footage listed above represents marketing square footage (please refer to section 3.2 of the Declaration and Exhibit 5 for more information). Brokers warmly welcomed.

SALATO
POMPANO BEACH

Residence 305



THIRD FLOOR



**NORTH/
EAST**
DIRECTION

3
BEDROOMS

3.5
BATHS

2,308
A/C LIVING
AREA

365
COVERED
TERRACES

2,673
TOTAL S.F.

Artist's conceptual illustration only. Subject to modification.

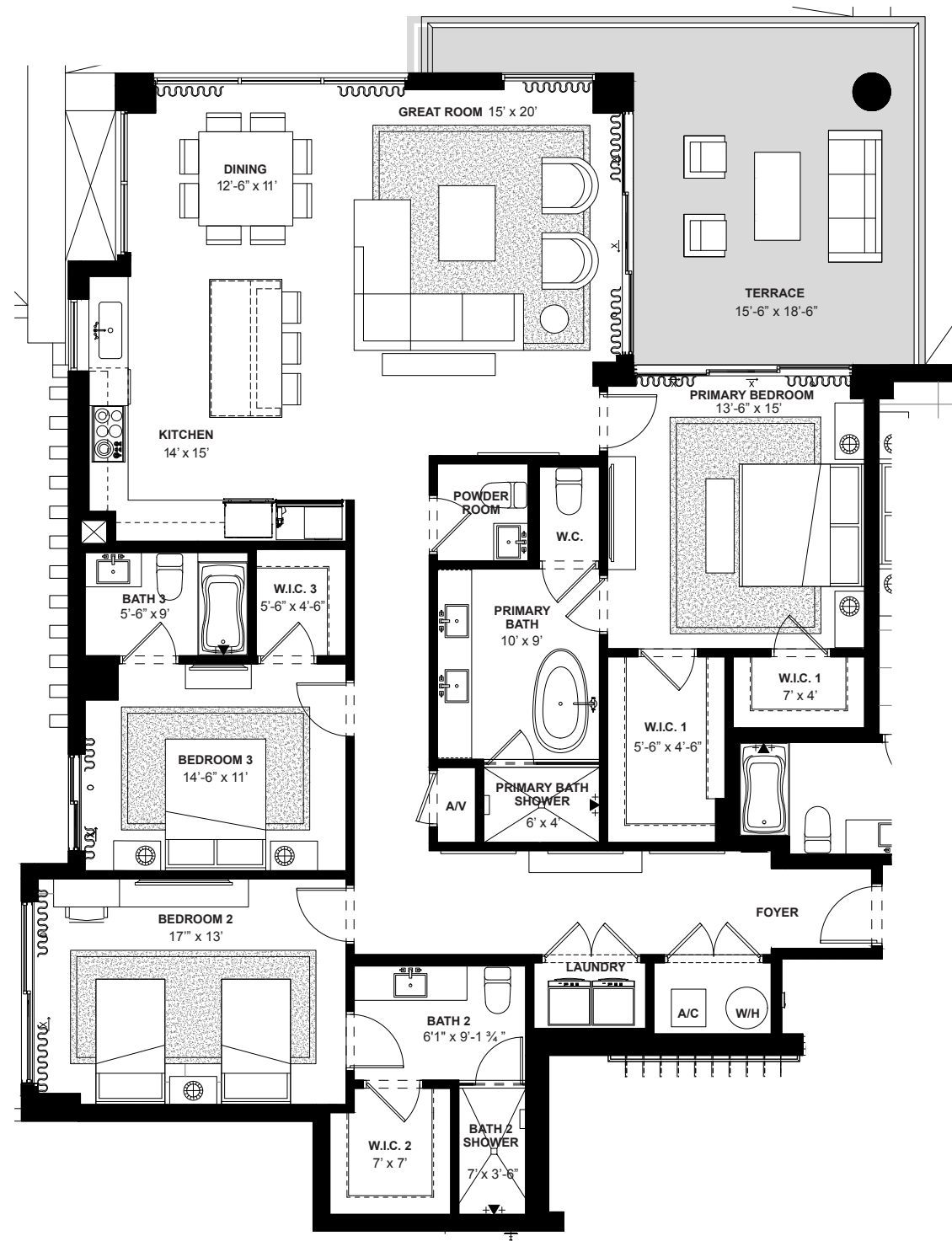


ORAL REPRESENTATIONS CANNOT BE RELIED UPON AS CORRECTLY STATING REPRESENTATIONS OF THE SELLER. FOR CORRECT REPRESENTATIONS, MAKE REFERENCE TO THIS BROCHURE AND TO THE DOCUMENTS REQUIRED BY SECTION 718.503, FLORIDA STATUTES TO BE FURNISHED BY A SELLER TO A BUYER OR LESSEE.

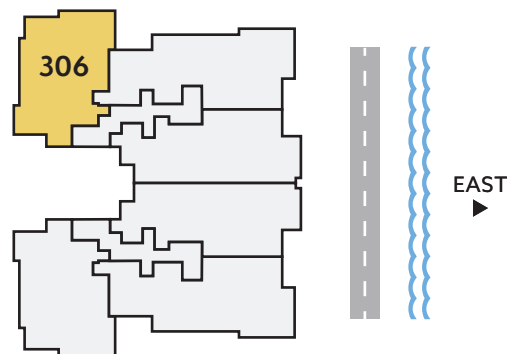
All dimensions, features, and specifications are approximate and subject to change without notice. Square footage listed above represents marketing square footage (please refer to section 3.2 of the Declaration and Exhibit 5 for more information). Brokers warmly welcomed.

SALATO
POMPANO BEACH

Residence 306



THIRD FLOOR



**NORTH/
WEST**
DIRECTION

3
BEDROOMS

3.5
BATHS

2,106
A/C LIVING
AREA

320
COVERED
TERRACES

2,426
TOTAL S.F.

Artist's conceptual illustration only. Subject to modification.

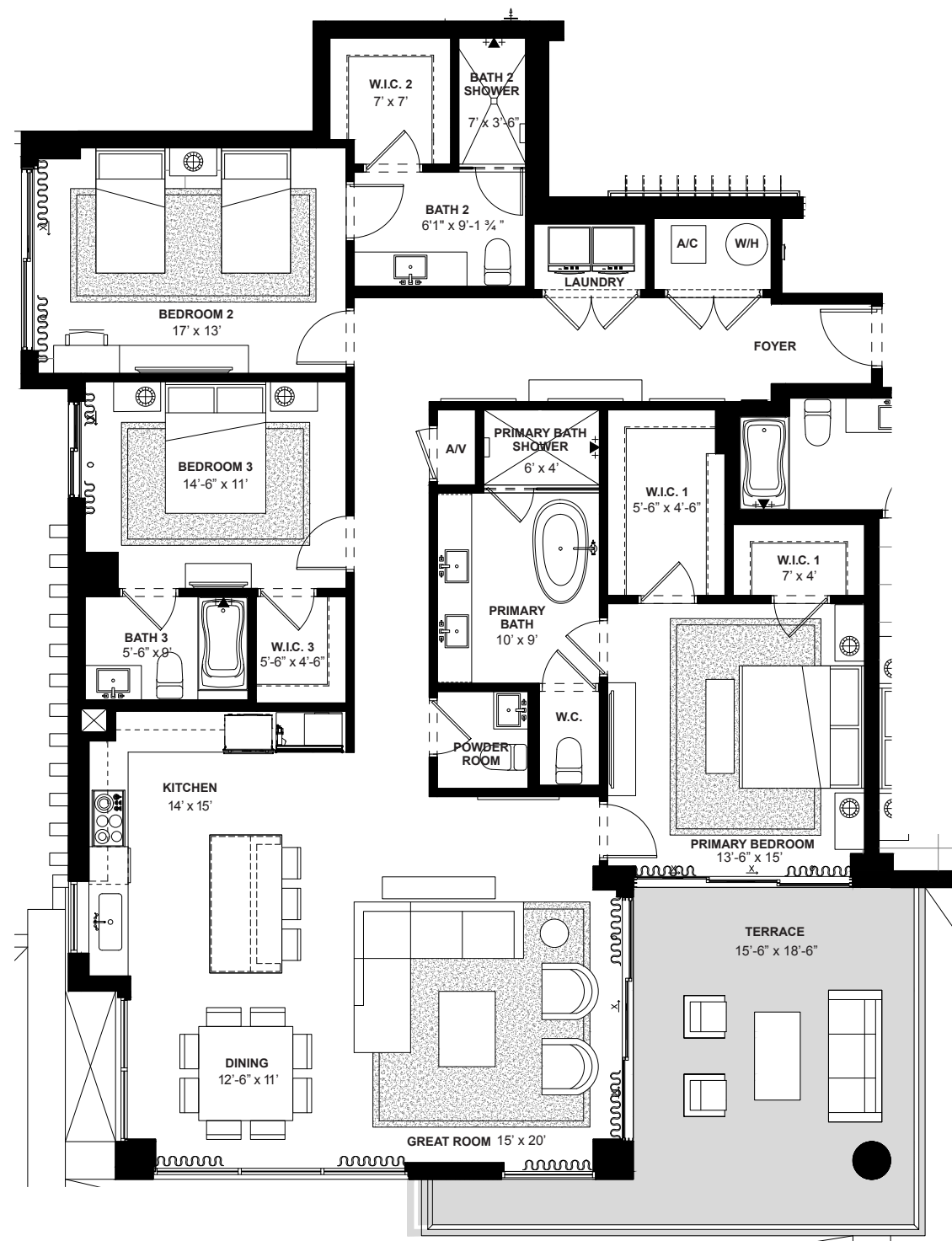


ORAL REPRESENTATIONS CANNOT BE RELIED UPON AS CORRECTLY STATING REPRESENTATIONS OF THE SELLER. FOR CORRECT REPRESENTATIONS, MAKE REFERENCE TO THIS BROCHURE AND TO THE DOCUMENTS REQUIRED BY SECTION 718.503, FLORIDA STATUTES TO BE FURNISHED BY A SELLER TO A BUYER OR LESSEE.

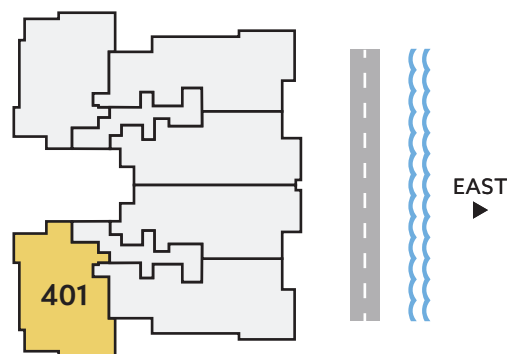
All dimensions, features, and specifications are approximate and subject to change without notice. Square footage listed above represents marketing square footage (please refer to section 3.2 of the Declaration and Exhibit 5 for more information). Brokers warmly welcomed.

SALATO
POMPANO BEACH

Residence 401



FOURTH FLOOR



**SOUTH/
WEST**
DIRECTION

3
BEDROOMS

3.5
BATHS

2,106
A/C LIVING
AREA

320
COVERED
TERRACES

2,426
TOTAL S.F.

Artist's conceptual illustration only. Subject to modification.

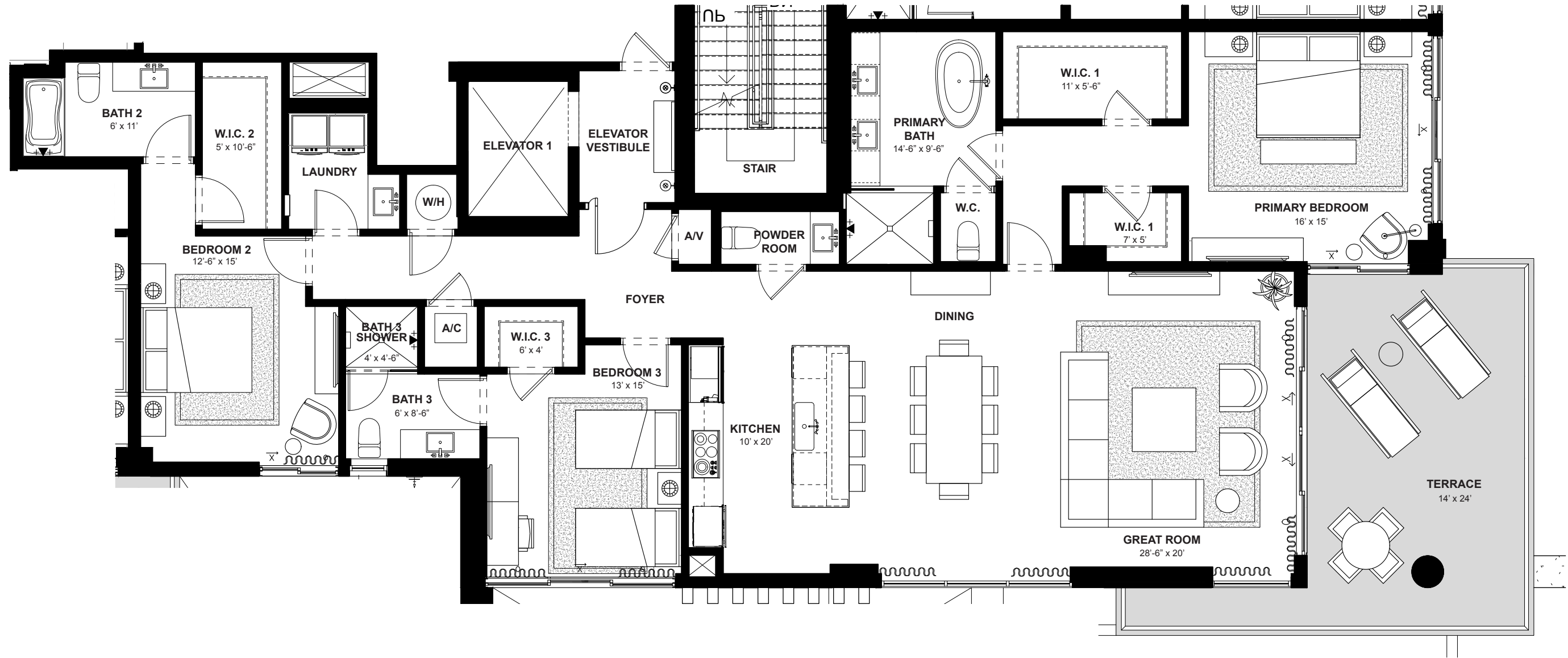


ORAL REPRESENTATIONS CANNOT BE RELIED UPON AS CORRECTLY STATING REPRESENTATIONS OF THE SELLER. FOR CORRECT REPRESENTATIONS, MAKE REFERENCE TO THIS BROCHURE AND TO THE DOCUMENTS REQUIRED BY SECTION 718.503, FLORIDA STATUTES TO BE FURNISHED BY A SELLER TO A BUYER OR LESSEE.

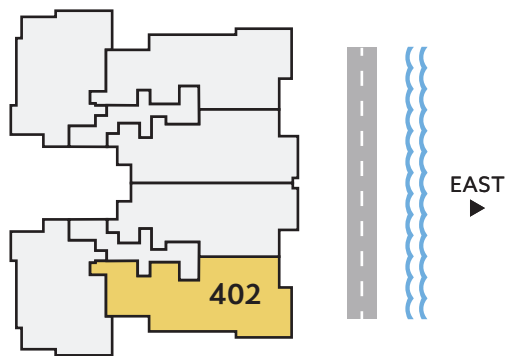
All dimensions, features, and specifications are approximate and subject to change without notice. Square footage listed above represents marketing square footage (please refer to section 3.2 of the Declaration and Exhibit 5 for more information). Brokers warmly welcomed.

SALATO
POMPANO BEACH

Residence 402



FOURTH FLOOR



SOUTH/ EAST DIRECTION	3	3.5	2,308	365	2,673
	BEDROOMS	BATHS	A/C LIVING AREA	COVERED TERRACES	TOTAL S.F.

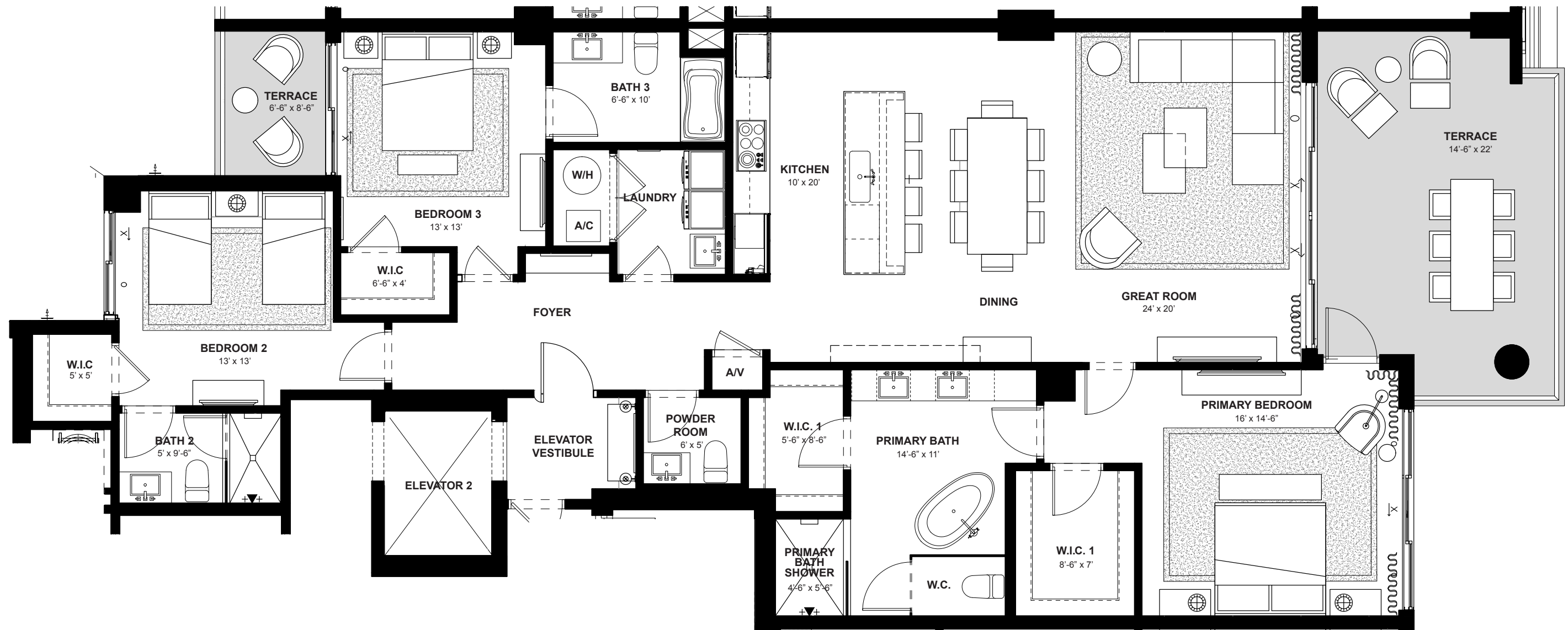
Artist's conceptual illustration only. Subject to modification.

ORAL REPRESENTATIONS CANNOT BE RELIED UPON AS CORRECTLY STATING REPRESENTATIONS OF THE SELLER. FOR CORRECT REPRESENTATIONS, MAKE REFERENCE TO THIS BROCHURE AND TO THE DOCUMENTS REQUIRED BY SECTION 718.503, FLORIDA STATUTES TO BE FURNISHED BY A SELLER TO A BUYER OR LESSEE.

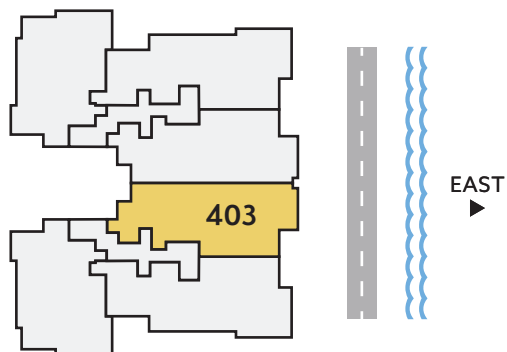
All dimensions, features, and specifications are approximate and subject to change without notice. Square footage listed above represents marketing square footage (please refer to section 3.2 of the Declaration and Exhibit 5 for more information). Brokers warmly welcomed.



Residence 403




FOURTH FLOOR



EAST DIRECTION	3 BEDROOMS	3.5 BATHS	2,132 A/C LIVING AREA	358 COVERED TERRACES	2,490 TOTAL S.F.
--------------------------	----------------------	---------------------	------------------------------------	-----------------------------------	----------------------------

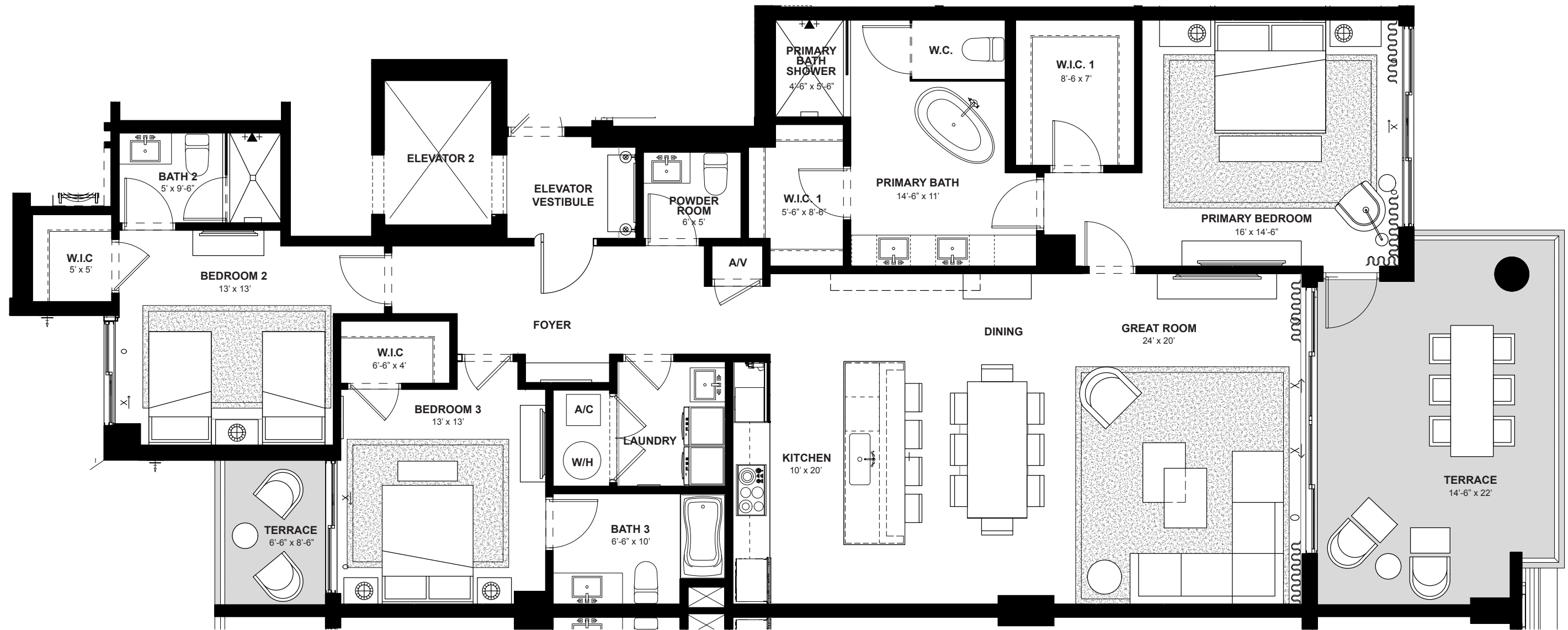
Artist's conceptual illustration only. Subject to modification.

 ORAL REPRESENTATIONS CANNOT BE RELIED UPON AS CORRECTLY STATING REPRESENTATIONS OF THE SELLER. FOR CORRECT REPRESENTATIONS, MAKE REFERENCE TO THIS BROCHURE AND TO THE DOCUMENTS REQUIRED BY SECTION 718.503, FLORIDA STATUTES TO BE FURNISHED BY A SELLER TO A BUYER OR LESSEE.

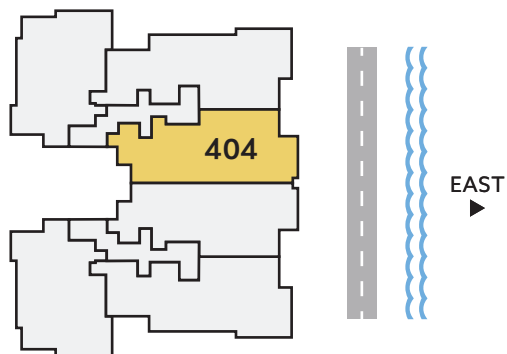
All dimensions, features, and specifications are approximate and subject to change without notice. Square footage listed above represents marketing square footage (please refer to section 3.2 of the Declaration and Exhibit 5 for more information). Brokers warmly welcomed.

SALATO
POMPANO BEACH

Residence 404




FOURTH FLOOR



EAST DIRECTION	3 BEDROOMS	3.5 BATHS	2,132 A/C LIVING AREA	358 COVERED TERRACES	2,490 TOTAL S.F.
--------------------------	----------------------	---------------------	------------------------------------	-----------------------------------	----------------------------

Artist's conceptual illustration only. Subject to modification.

 ORAL REPRESENTATIONS CANNOT BE RELIED UPON AS CORRECTLY STATING REPRESENTATIONS OF THE SELLER. FOR CORRECT REPRESENTATIONS, MAKE REFERENCE TO THIS BROCHURE AND TO THE DOCUMENTS REQUIRED BY SECTION 718.503, FLORIDA STATUTES TO BE FURNISHED BY A SELLER TO A BUYER OR LESSEE.

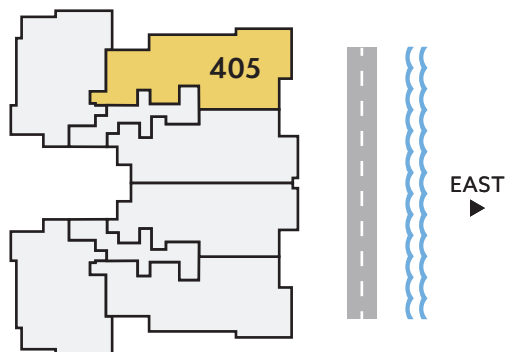
All dimensions, features, and specifications are approximate and subject to change without notice. Square footage listed above represents marketing square footage (please refer to section 3.2 of the Declaration and Exhibit 5 for more information). Brokers warmly welcomed.

SALATO
POMPANO BEACH

Residence 405



FOURTH FLOOR



**NORTH/
EAST**
DIRECTION

3
BEDROOMS

3.5
BATHS

2,308
A/C LIVING
AREA

365
COVERED
TERRACES

2,673
TOTAL S.F.

Artist's conceptual illustration only. Subject to modification.



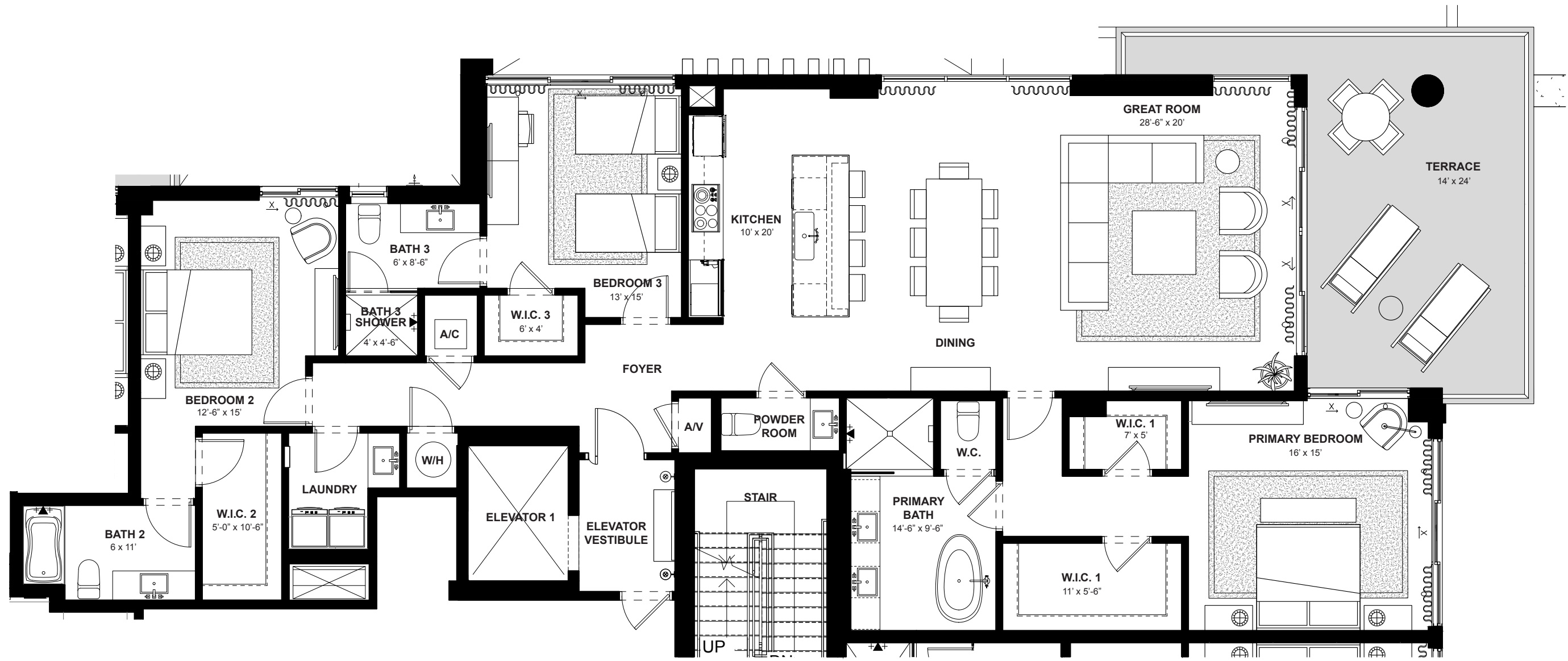
ORAL REPRESENTATIONS CANNOT BE RELIED UPON AS CORRECTLY STATING REPRESENTATIONS OF THE SELLER. FOR CORRECT REPRESENTATIONS, MAKE REFERENCE TO THIS BROCHURE AND TO THE DOCUMENTS REQUIRED BY SECTION 718.503, FLORIDA STATUTES TO BE FURNISHED BY A SELLER TO A BUYER OR LESSEE.

All dimensions, features, and specifications are approximate and subject to change without notice. Square footage listed above represents marketing square footage (please refer to section 3.2 of the Declaration and Exhibit 5 for more information). Brokers warmly welcomed.

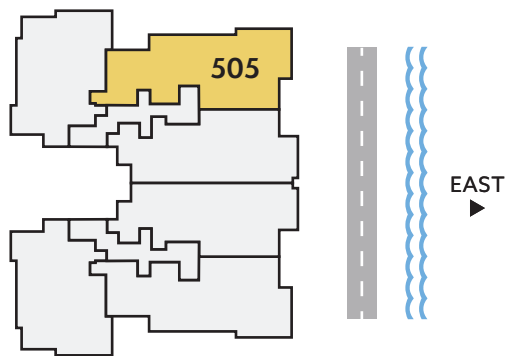
SALATO

POMPANO BEACH

Residence 505




FIFTH FLOOR



NORTH/ EAST DIRECTION	3	3.5	2,308	365	2,673
	BEDROOMS	BATHS	A/C LIVING AREA	COVERED TERRACES	TOTAL S.F.

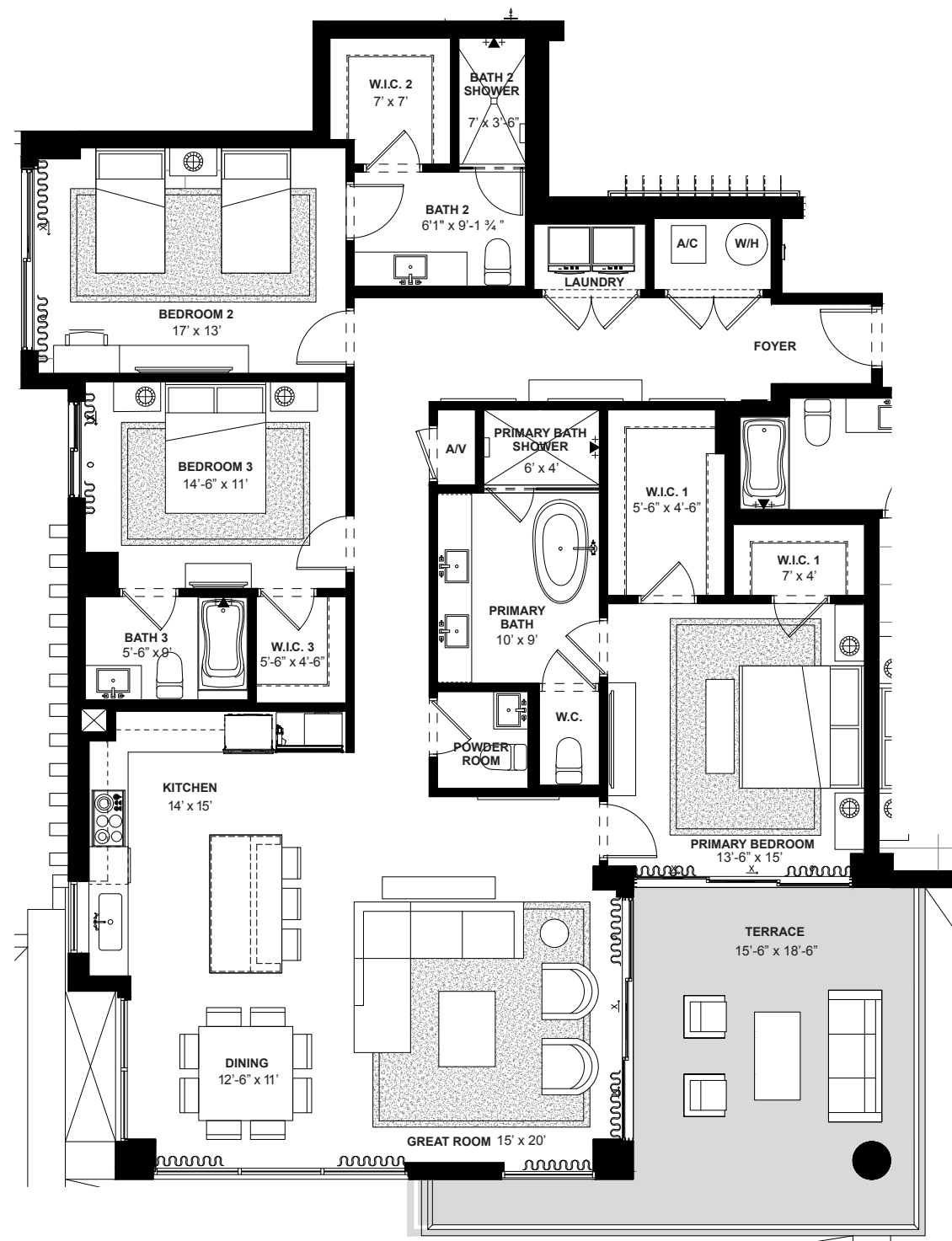
Artist's conceptual illustration only. Subject to modification.

 ORAL REPRESENTATIONS CANNOT BE RELIED UPON AS CORRECTLY STATING REPRESENTATIONS OF THE SELLER. FOR CORRECT REPRESENTATIONS, MAKE REFERENCE TO THIS BROCHURE AND TO THE DOCUMENTS REQUIRED BY SECTION 718.503, FLORIDA STATUTES TO BE FURNISHED BY A SELLER TO A BUYER OR LESSEE.

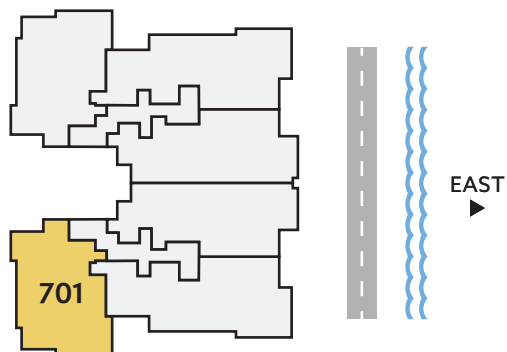
All dimensions, features, and specifications are approximate and subject to change without notice. Square footage listed above represents marketing square footage (please refer to section 3.2 of the Declaration and Exhibit 5 for more information). Brokers warmly welcomed.

SALATO
POMPANO BEACH

Residence 701



SEVENTH FLOOR



**SOUTH/
WEST**
DIRECTION

3
BEDROOMS

3.5
BATHS

2,106
A/C LIVING
AREA

320
COVERED
TERRACES

2,426
TOTAL S.F.

Artist's conceptual illustration only. Subject to modification.

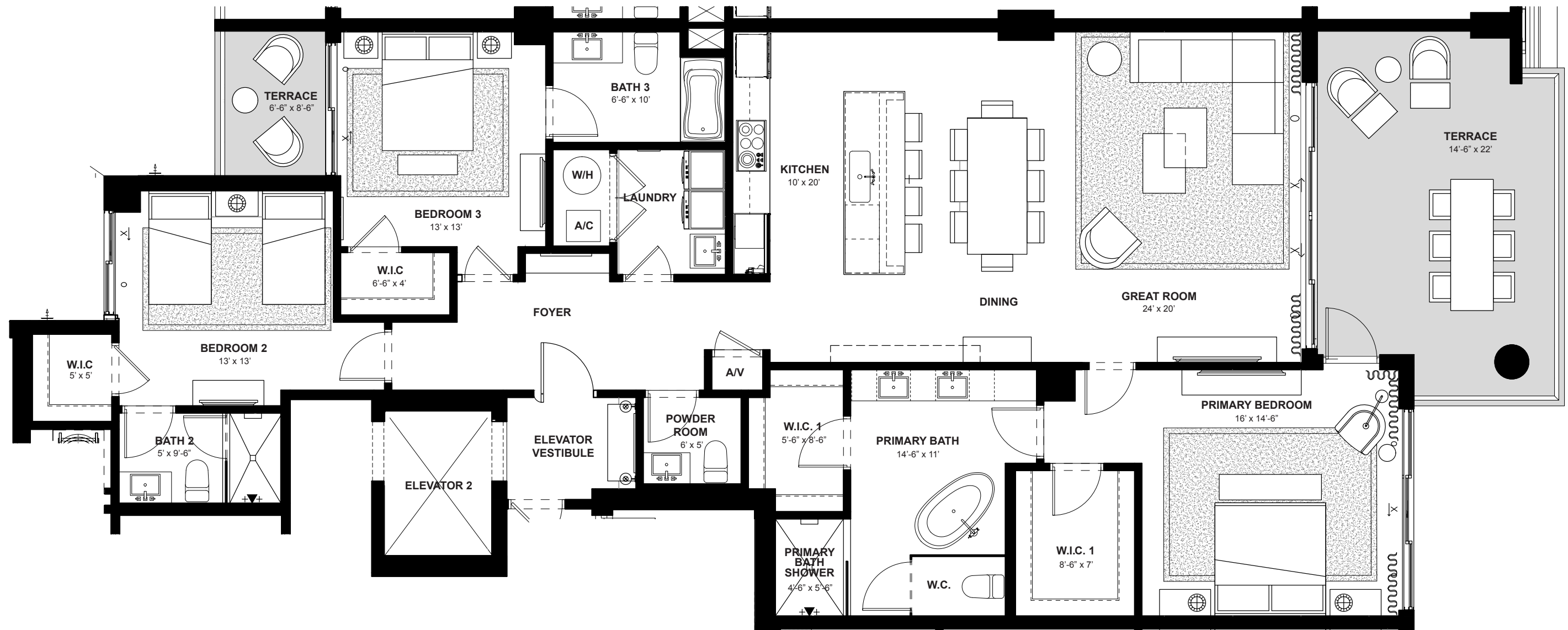


ORAL REPRESENTATIONS CANNOT BE RELIED UPON AS CORRECTLY STATING REPRESENTATIONS OF THE SELLER. FOR CORRECT REPRESENTATIONS, MAKE REFERENCE TO THIS BROCHURE AND TO THE DOCUMENTS REQUIRED BY SECTION 718.503, FLORIDA STATUTES TO BE FURNISHED BY A SELLER TO A BUYER OR LESSEE.

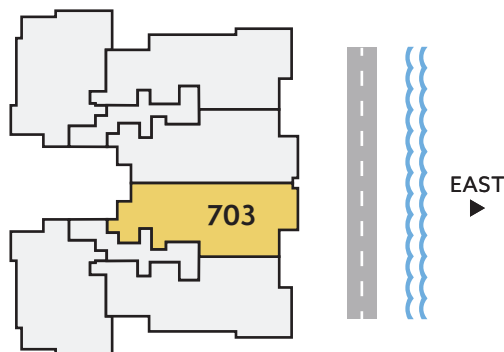
All dimensions, features, and specifications are approximate and subject to change without notice. Square footage listed above represents marketing square footage (please refer to section 3.2 of the Declaration and Exhibit 5 for more information). Brokers warmly welcomed.

SALATO
POMPANO BEACH

Residence 703




SEVENTH FLOOR



EAST DIRECTION	3 BEDROOMS	3.5 BATHS	2,132 A/C LIVING AREA	358 COVERED TERRACES	2,490 TOTAL S.F.
--------------------------	----------------------	---------------------	------------------------------------	-----------------------------------	----------------------------

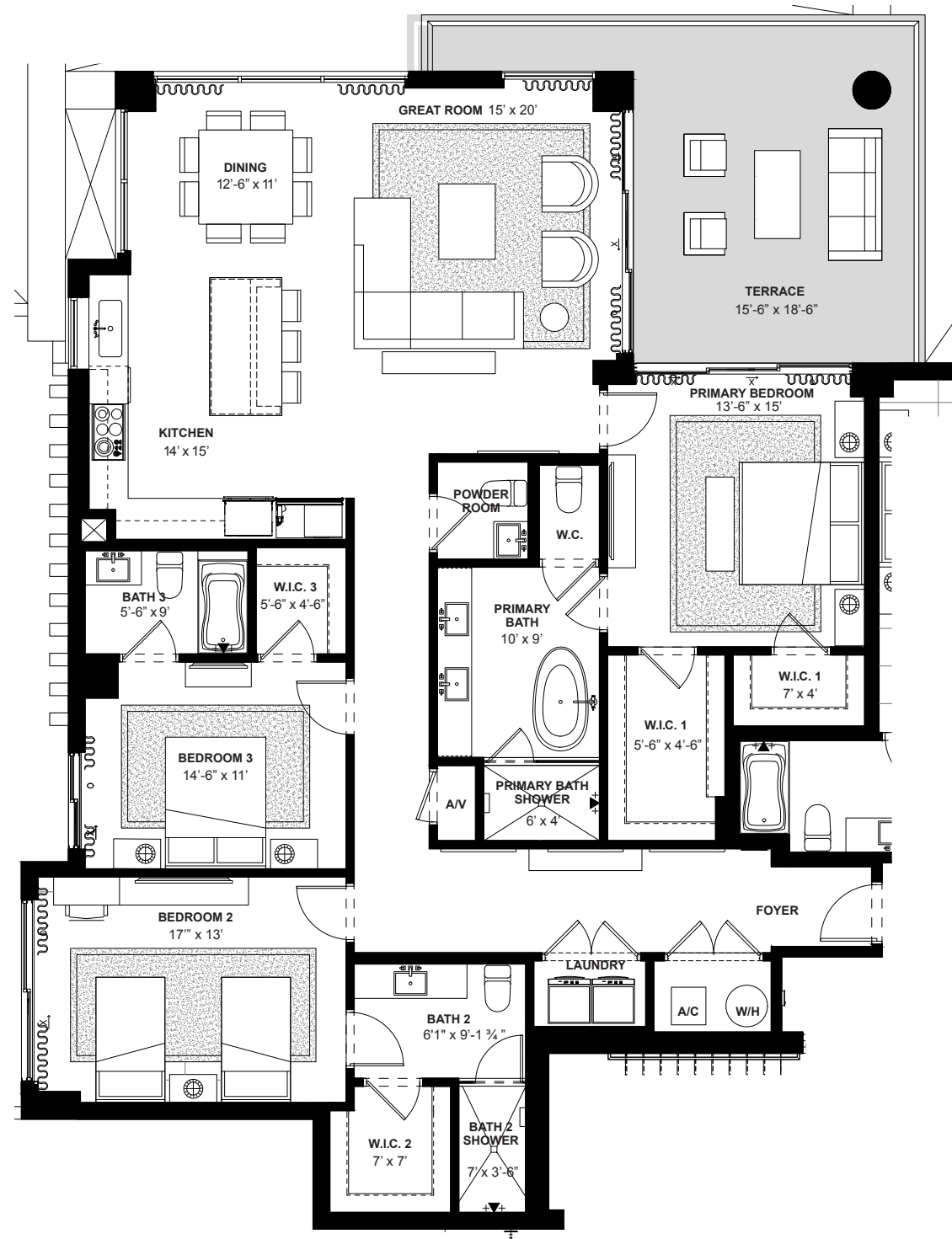
Artist's conceptual illustration only. Subject to modification.

 ORAL REPRESENTATIONS CANNOT BE RELIED UPON AS CORRECTLY STATING REPRESENTATIONS OF THE SELLER. FOR CORRECT REPRESENTATIONS, MAKE REFERENCE TO THIS BROCHURE AND TO THE DOCUMENTS REQUIRED BY SECTION 718.503, FLORIDA STATUTES TO BE FURNISHED BY A SELLER TO A BUYER OR LESSEE.

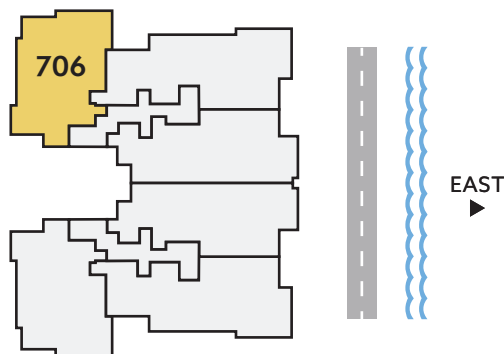
All dimensions, features, and specifications are approximate and subject to change without notice. Square footage listed above represents marketing square footage (please refer to section 3.2 of the Declaration and Exhibit 5 for more information). Brokers warmly welcomed.

SALATO
POMPANO BEACH

Residence 706



SEVENTH FLOOR



**NORTH/
WEST**
DIRECTION

3
BEDROOMS

3.5
BATHS

2,106
A/C LIVING
AREA

320
COVERED
TERRACES

2,426
TOTAL S.F.

Artist's conceptual illustration only. Subject to modification.

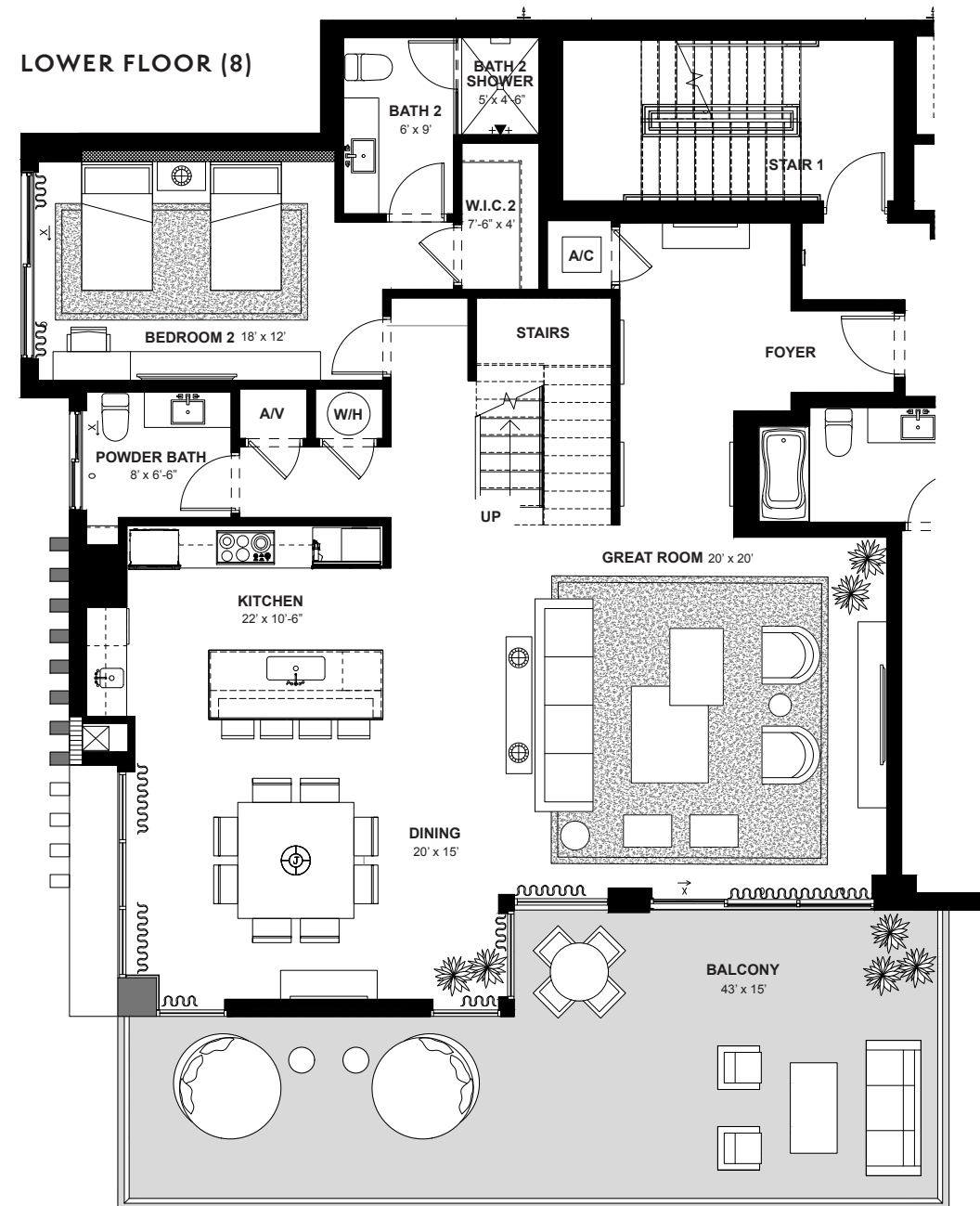


ORAL REPRESENTATIONS CANNOT BE RELIED UPON AS CORRECTLY STATING REPRESENTATIONS OF THE SELLER. FOR CORRECT REPRESENTATIONS, MAKE REFERENCE TO THIS BROCHURE AND TO THE DOCUMENTS REQUIRED BY SECTION 718.503, FLORIDA STATUTES TO BE FURNISHED BY A SELLER TO A BUYER OR LESSEE.

All dimensions, features, and specifications are approximate and subject to change without notice. Square footage listed above represents marketing square footage (please refer to section 3.2 of the Declaration and Exhibit 5 for more information). Brokers warmly welcomed.

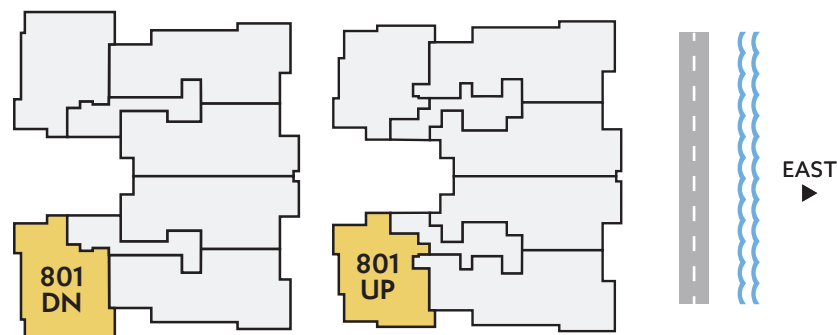
SALATO
POMPANO BEACH

Residence 801



EIGHTH FLOOR

NINTH FLOOR



**SOUTH/
WEST**
DIRECTION

3
BEDROOMS

3.5
BATHS

3,354
A/C LIVING
AREA

746
COVERED
TERRACES

4,100
TOTAL S.F.

Artist's conceptual illustration only. Subject to modification.

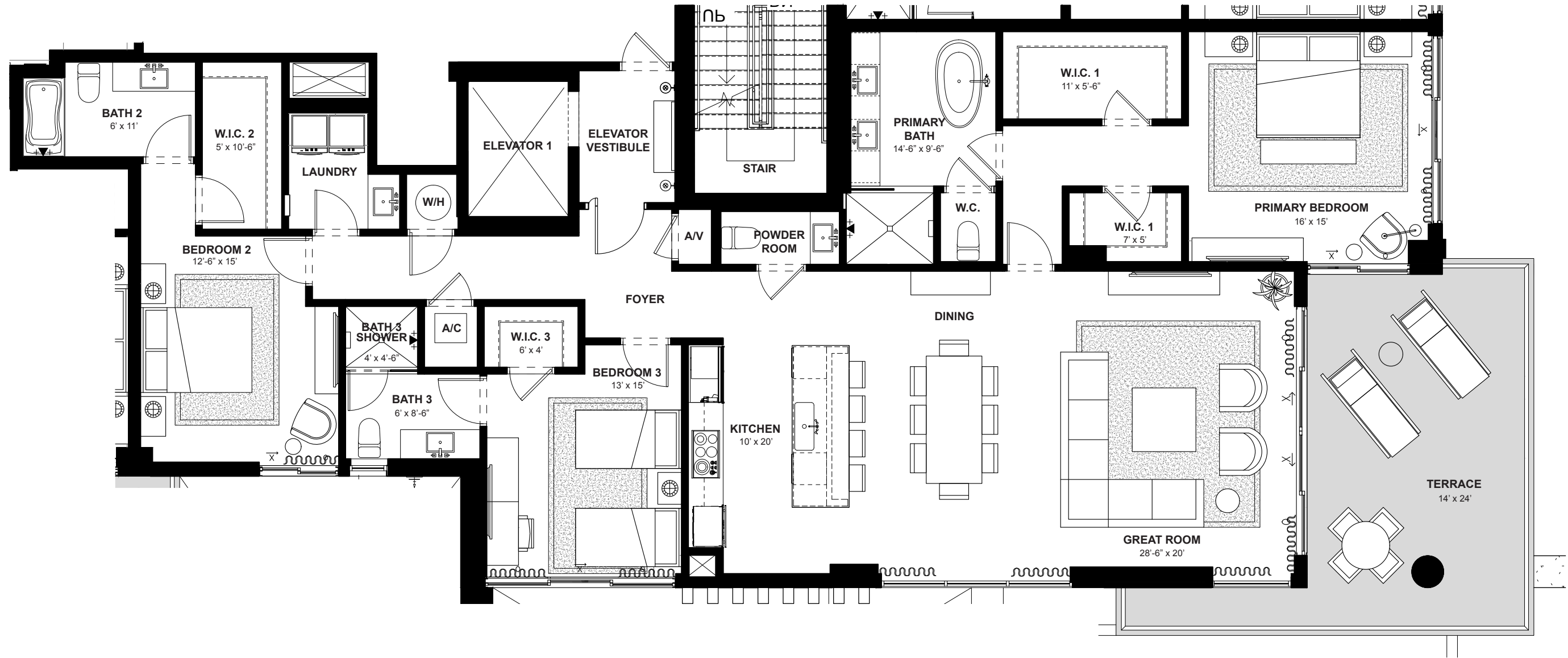


ORAL REPRESENTATIONS CANNOT BE RELIED UPON AS CORRECTLY STATING REPRESENTATIONS OF THE SELLER. FOR CORRECT REPRESENTATIONS, MAKE REFERENCE TO THIS BROCHURE AND TO THE DOCUMENTS REQUIRED BY SECTION 718.503, FLORIDA STATUTES TO BE FURNISHED BY A SELLER TO A BUYER OR LESSEE.

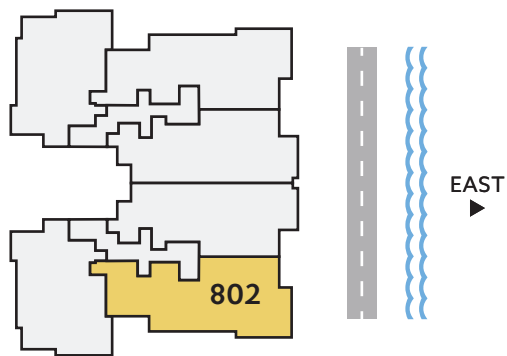
All dimensions, features, and specifications are approximate and subject to change without notice. Square footage listed above represents marketing square footage (please refer to section 3.2 of the Declaration and Exhibit 5 for more information). Brokers warmly welcomed.

SALATO
POMPANO BEACH

Residence 802




EIGHTH FLOOR



SOUTH/ EAST DIRECTION	3	3.5	2,308	365	2,673
	BEDROOMS	BATHS	A/C LIVING AREA	COVERED TERRACES	TOTAL S.F.

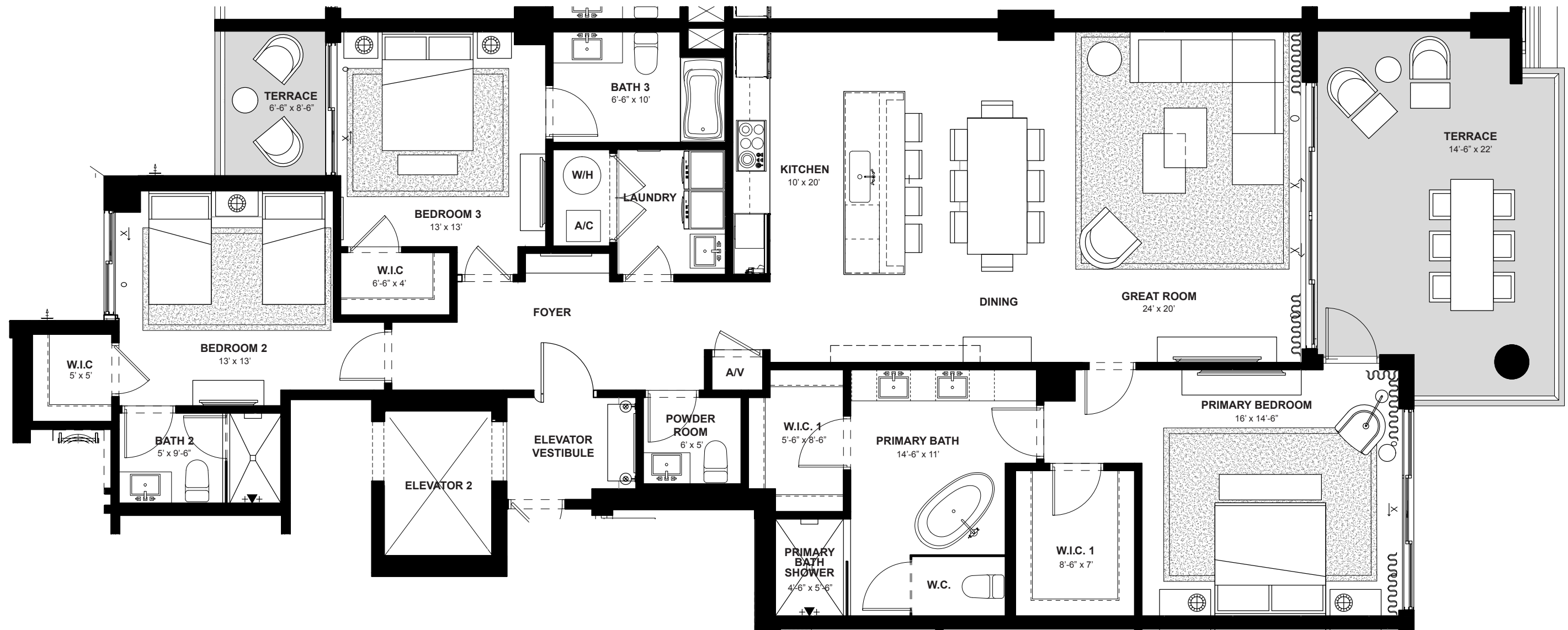
Artist's conceptual illustration only. Subject to modification.

 ORAL REPRESENTATIONS CANNOT BE RELIED UPON AS CORRECTLY STATING REPRESENTATIONS OF THE SELLER. FOR CORRECT REPRESENTATIONS, MAKE REFERENCE TO THIS BROCHURE AND TO THE DOCUMENTS REQUIRED BY SECTION 718.503, FLORIDA STATUTES TO BE FURNISHED BY A SELLER TO A BUYER OR LESSEE.

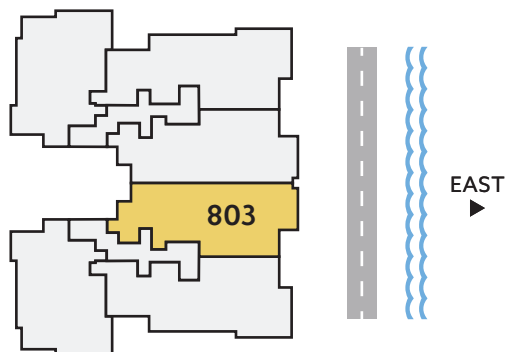
All dimensions, features, and specifications are approximate and subject to change without notice. Square footage listed above represents marketing square footage (please refer to section 3.2 of the Declaration and Exhibit 5 for more information). Brokers warmly welcomed.



Residence 803




EIGHTH FLOOR



EAST DIRECTION	3 BEDROOMS	3.5 BATHS	2,132 A/C LIVING AREA	358 COVERED TERRACES	2,490 TOTAL S.F.
-------------------	---------------	--------------	-----------------------------	----------------------------	---------------------

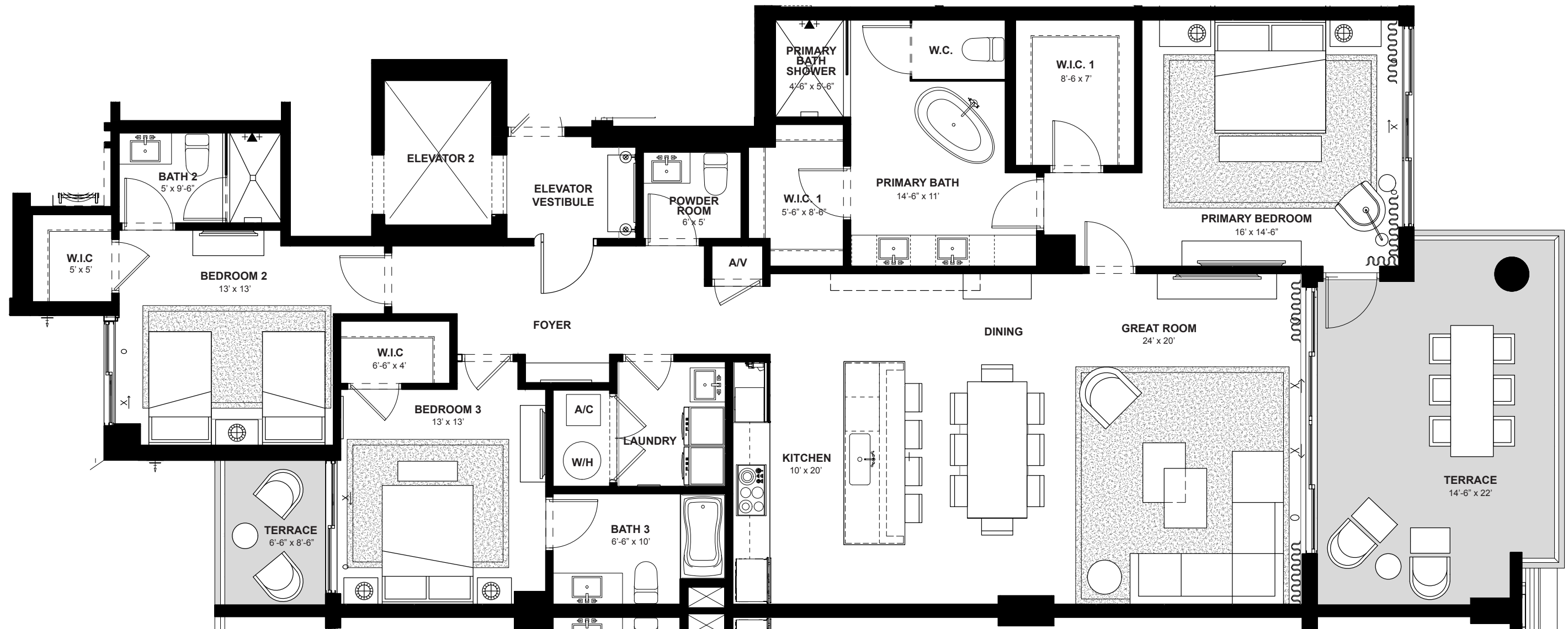
Artist's conceptual illustration only. Subject to modification.

 ORAL REPRESENTATIONS CANNOT BE RELIED UPON AS CORRECTLY STATING REPRESENTATIONS OF THE SELLER. FOR CORRECT REPRESENTATIONS, MAKE REFERENCE TO THIS BROCHURE AND TO THE DOCUMENTS REQUIRED BY SECTION 718.503, FLORIDA STATUTES TO BE FURNISHED BY A SELLER TO A BUYER OR LESSEE.

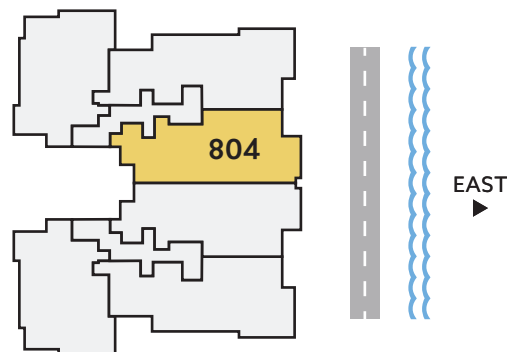
All dimensions, features, and specifications are approximate and subject to change without notice. Square footage listed above represents marketing square footage (please refer to section 3.2 of the Declaration and Exhibit 5 for more information). Brokers warmly welcomed.

SALATO
POMPANO BEACH

Residence 804




EIGHTH FLOOR



EAST DIRECTION	3 BEDROOMS	3.5 BATHS	2,132 A/C LIVING AREA	358 COVERED TERRACES	2,490 TOTAL S.F.
--------------------------	----------------------	---------------------	---------------------------------	--------------------------------	----------------------------

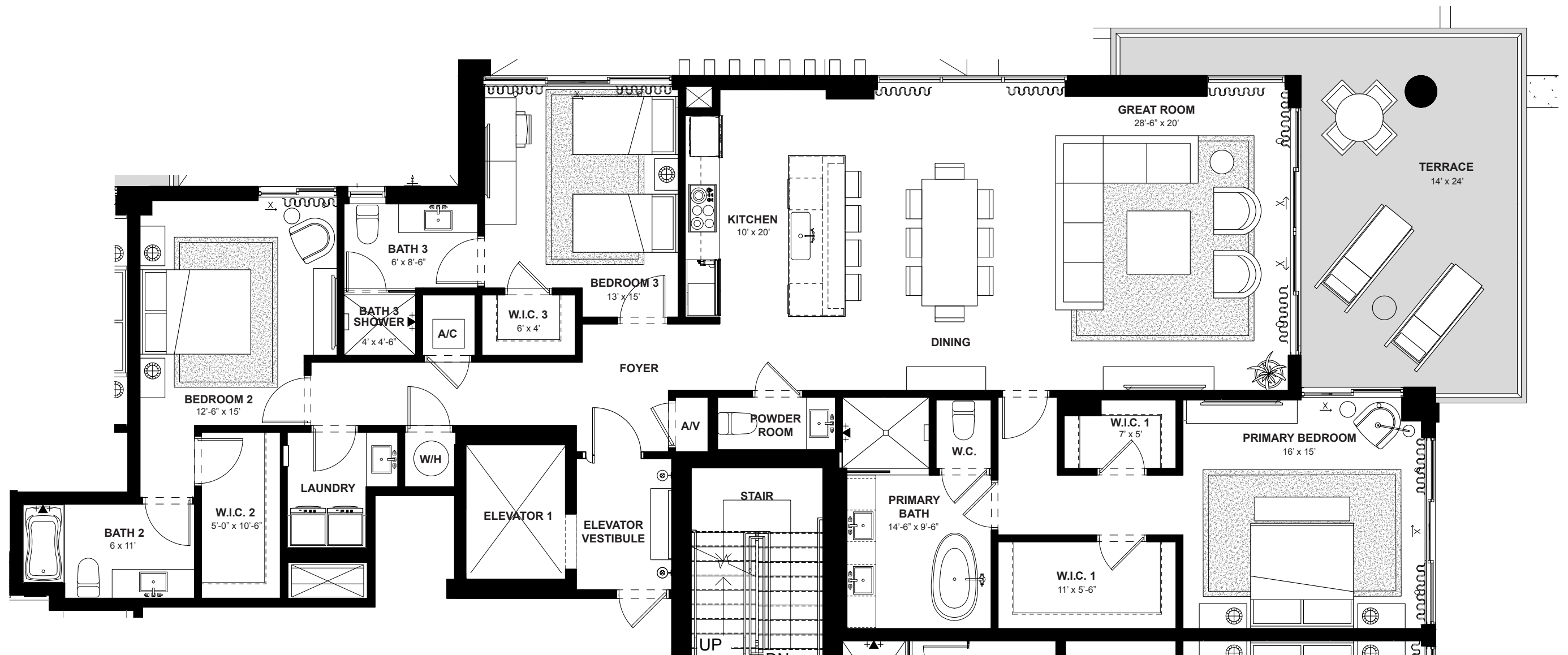
Artist's conceptual illustration only. Subject to modification.

 ORAL REPRESENTATIONS CANNOT BE RELIED UPON AS CORRECTLY STATING REPRESENTATIONS OF THE SELLER. FOR CORRECT REPRESENTATIONS, MAKE REFERENCE TO THIS BROCHURE AND TO THE DOCUMENTS REQUIRED BY SECTION 718.503, FLORIDA STATUTES TO BE FURNISHED BY A SELLER TO A BUYER OR LESSEE.

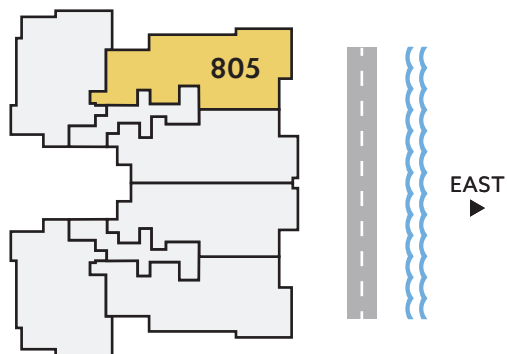
All dimensions, features, and specifications are approximate and subject to change without notice. Square footage listed above represents marketing square footage (please refer to section 3.2 of the Declaration and Exhibit 5 for more information). Brokers warmly welcomed.

SALATO
POMPANO BEACH

Residence 805



EIGHTH FLOOR



**NORTH/
EAST**
DIRECTION

3
BEDROOMS


3.5
BATHS

2,308
A/C LIVING
AREA

365
COVERED
TERRACES

2,673
TOTAL S.F.

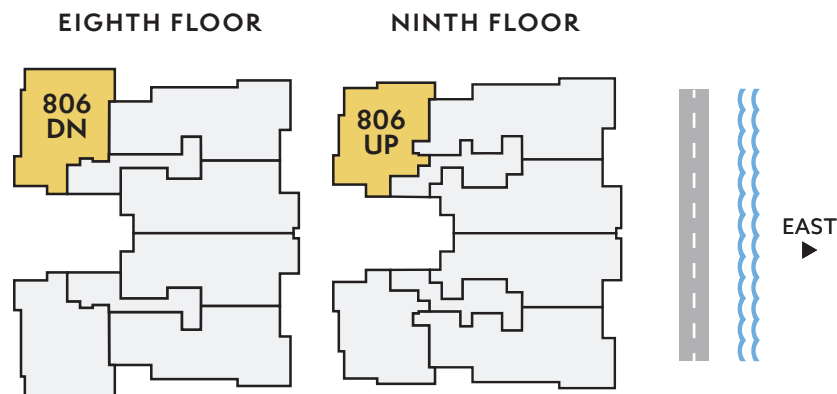
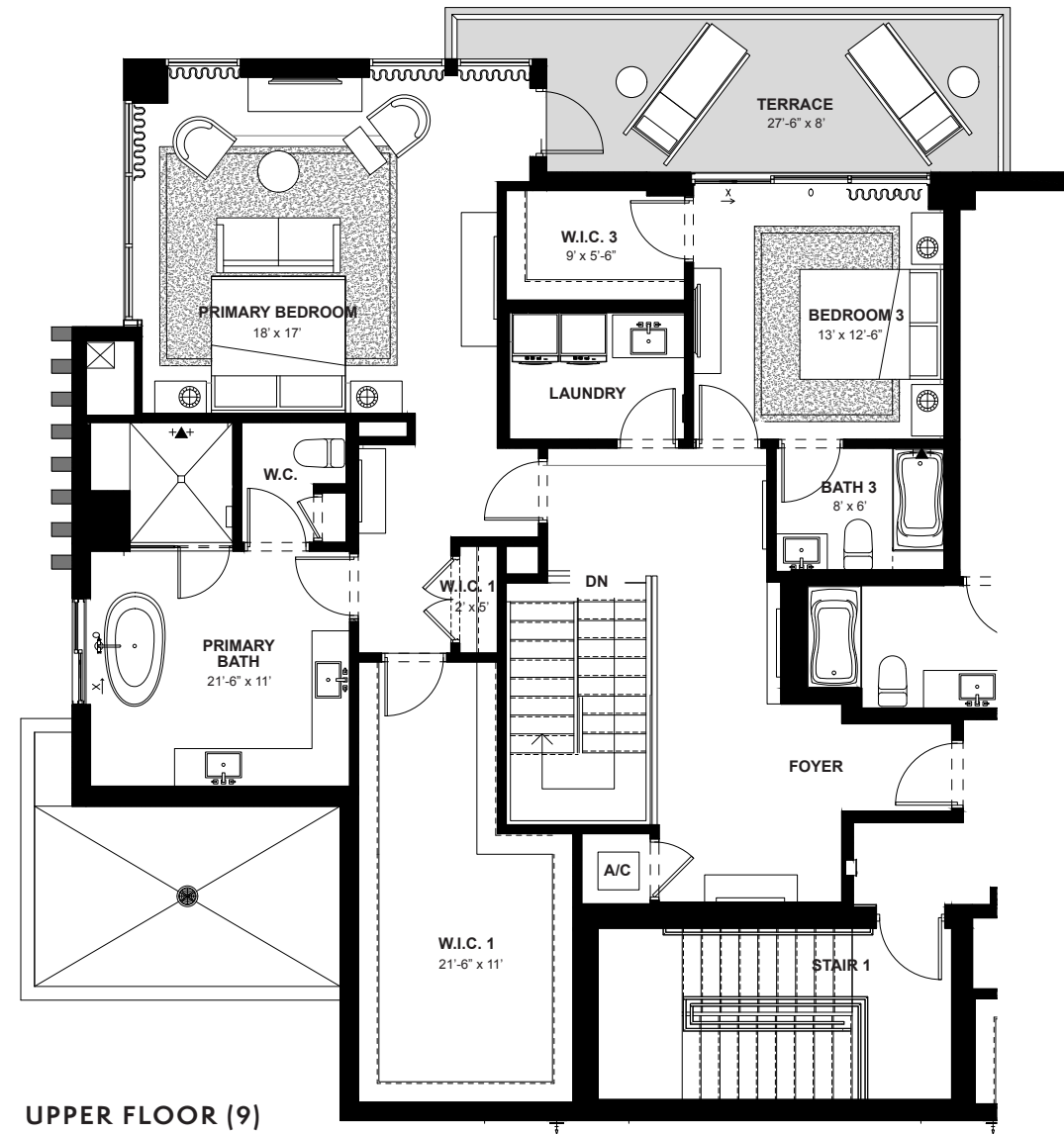
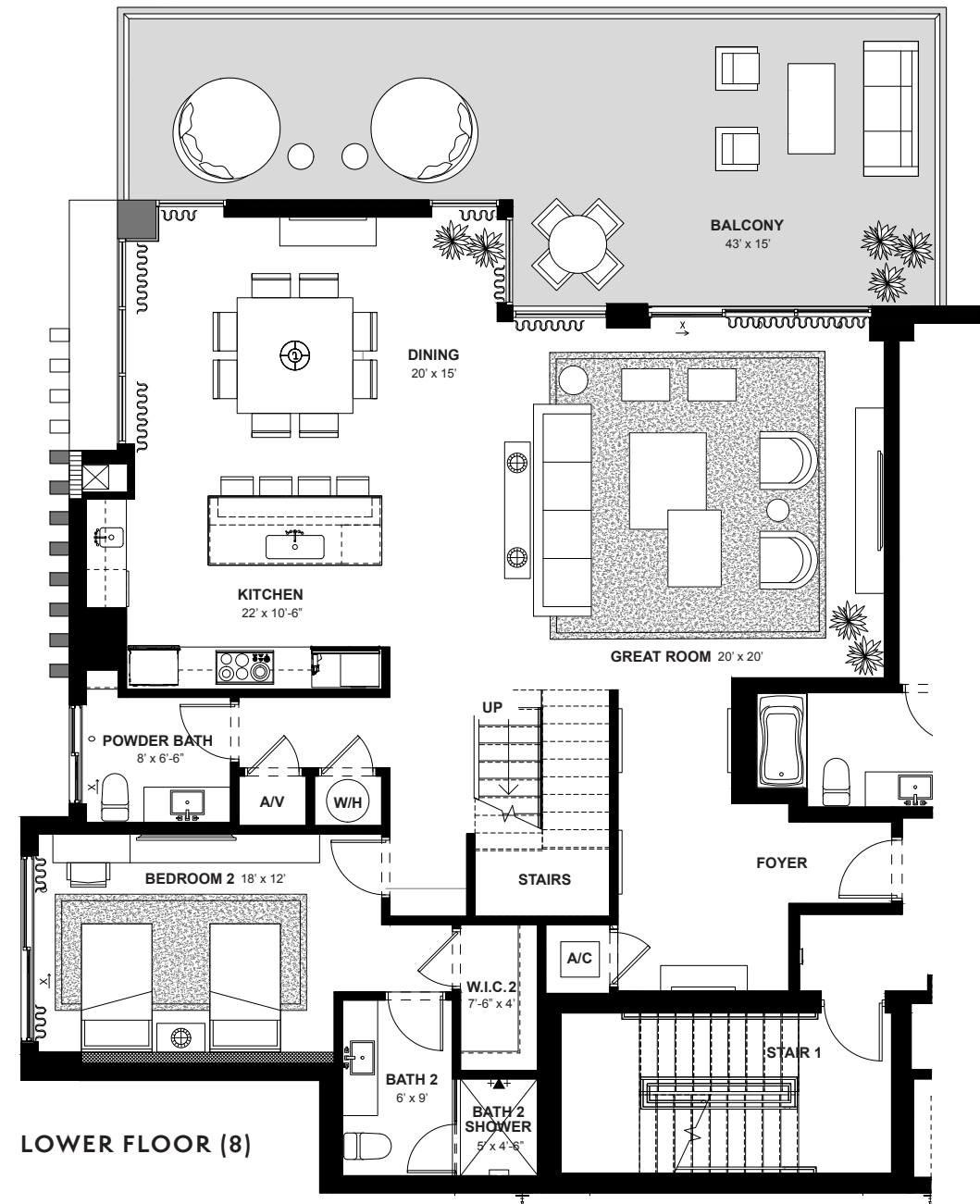
Artist's conceptual illustration only. Subject to modification.

 ORAL REPRESENTATIONS CANNOT BE RELIED UPON AS CORRECTLY STATING REPRESENTATIONS OF THE SELLER. FOR CORRECT REPRESENTATIONS, MAKE REFERENCE TO THIS BROCHURE AND TO THE DOCUMENTS REQUIRED BY SECTION 718.503, FLORIDA STATUTES TO BE FURNISHED BY A SELLER TO A BUYER OR LESSEE.

All dimensions, features, and specifications are approximate and subject to change without notice. Square footage listed above represents marketing square footage (please refer to section 3.2 of the Declaration and Exhibit 5 for more information). Brokers warmly welcomed.

SALATO
POMPANO BEACH

Residence 806



NORTH/WEST
DIRECTION

3
BEDROOMS

3.5
BATHS

3,354
A/C LIVING AREA

746
COVERED TERRACES

4,100
TOTAL S.F.

Artist's conceptual illustration only. Subject to modification.

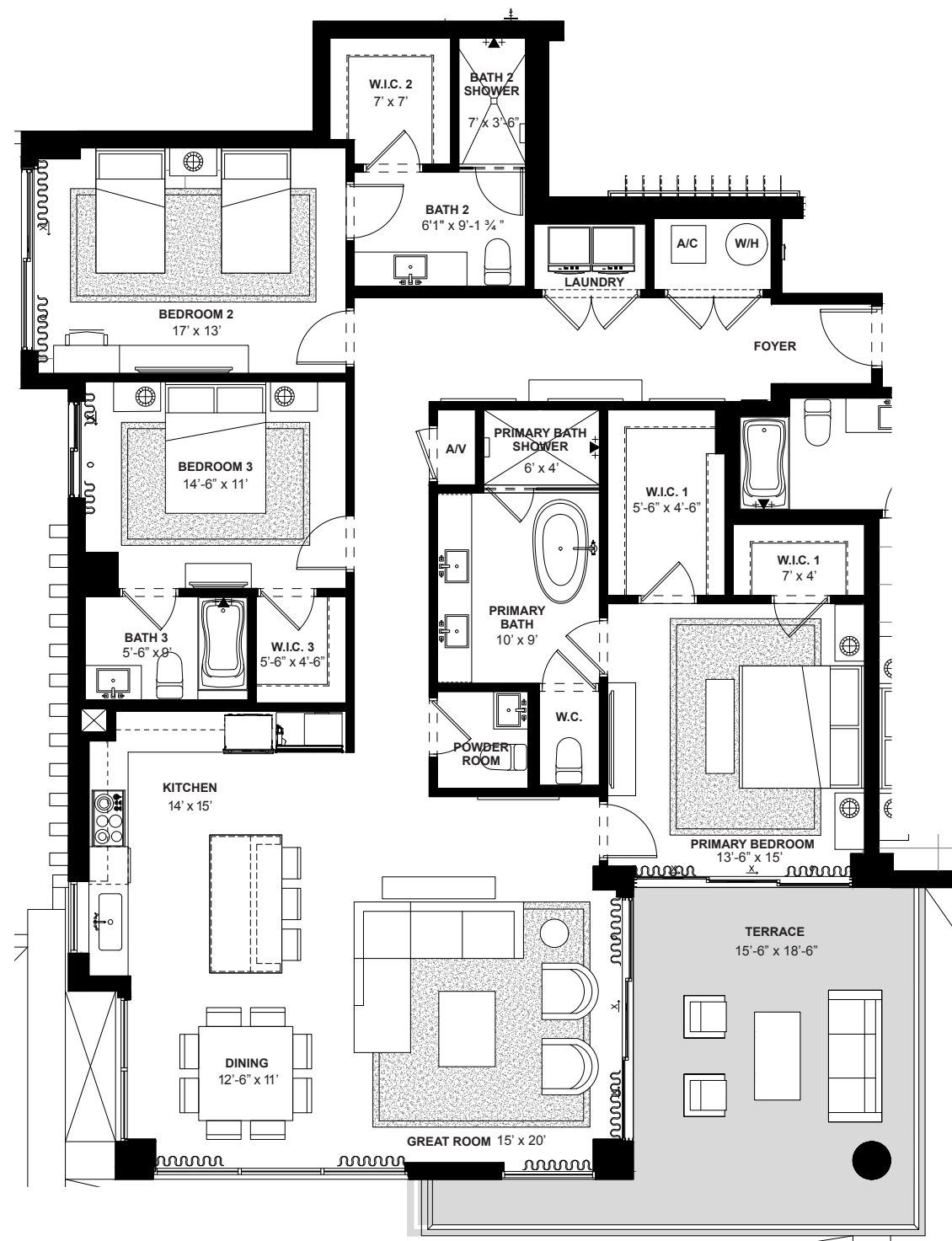


ORAL REPRESENTATIONS CANNOT BE RELIED UPON AS CORRECTLY STATING REPRESENTATIONS OF THE SELLER. FOR CORRECT REPRESENTATIONS, MAKE REFERENCE TO THIS BROCHURE AND TO THE DOCUMENTS REQUIRED BY SECTION 718.503, FLORIDA STATUTES TO BE FURNISHED BY A SELLER TO A BUYER OR LESSEE.

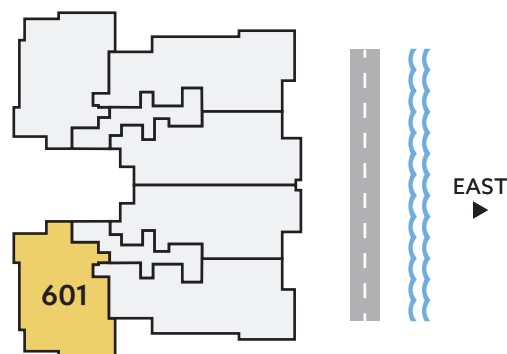
All dimensions, features, and specifications are approximate and subject to change without notice. Square footage listed above represents marketing square footage (please refer to section 3.2 of the Declaration and Exhibit 5 for more information). Brokers warmly welcomed.

SALATO
POMPANO BEACH

Residence 601



SIXTH FLOOR



**SOUTH/
WEST**
DIRECTION

3
BEDROOMS

3.5
BATHS

2,106
A/C LIVING
AREA

320
COVERED
TERRACES

2,426
TOTAL S.F.

Artist's conceptual illustration only. Subject to modification.

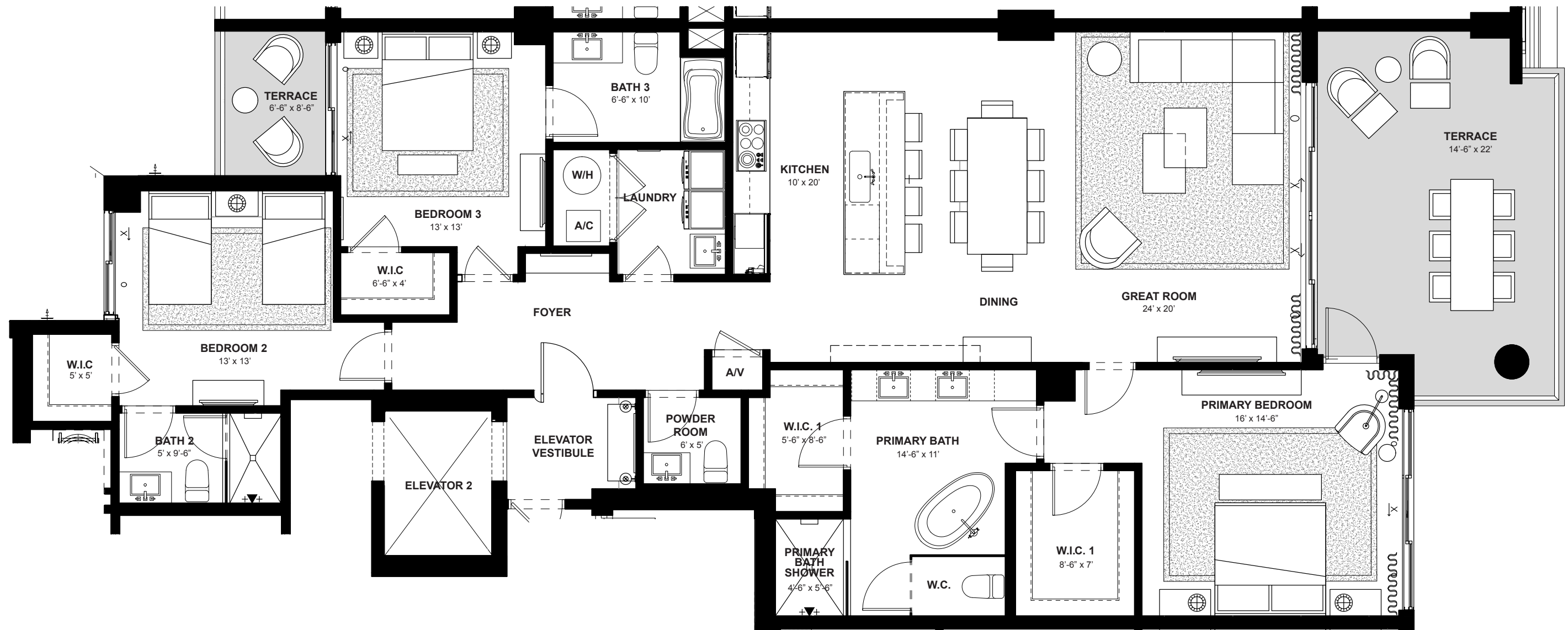


ORAL REPRESENTATIONS CANNOT BE RELIED UPON AS CORRECTLY STATING REPRESENTATIONS OF THE SELLER. FOR CORRECT REPRESENTATIONS, MAKE REFERENCE TO THIS BROCHURE AND TO THE DOCUMENTS REQUIRED BY SECTION 718.503, FLORIDA STATUTES TO BE FURNISHED BY A SELLER TO A BUYER OR LESSEE.

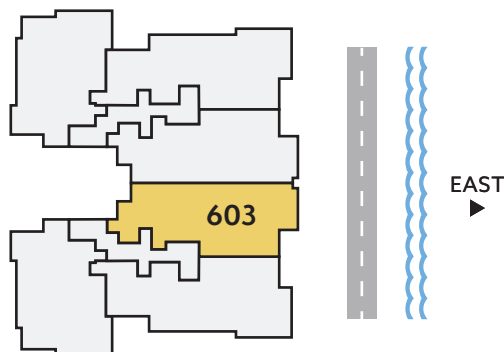
All dimensions, features, and specifications are approximate and subject to change without notice. Square footage listed above represents marketing square footage (please refer to section 3.2 of the Declaration and Exhibit 5 for more information). Brokers warmly welcomed.

SALATO
POMPANO BEACH

Residence 603




SIXTH FLOOR



EAST DIRECTION	3 BEDROOMS	3.5 BATHS	2,132 A/C LIVING AREA	358 COVERED TERRACES	2,490 TOTAL S.F.
--------------------------	----------------------	---------------------	------------------------------------	-----------------------------------	----------------------------

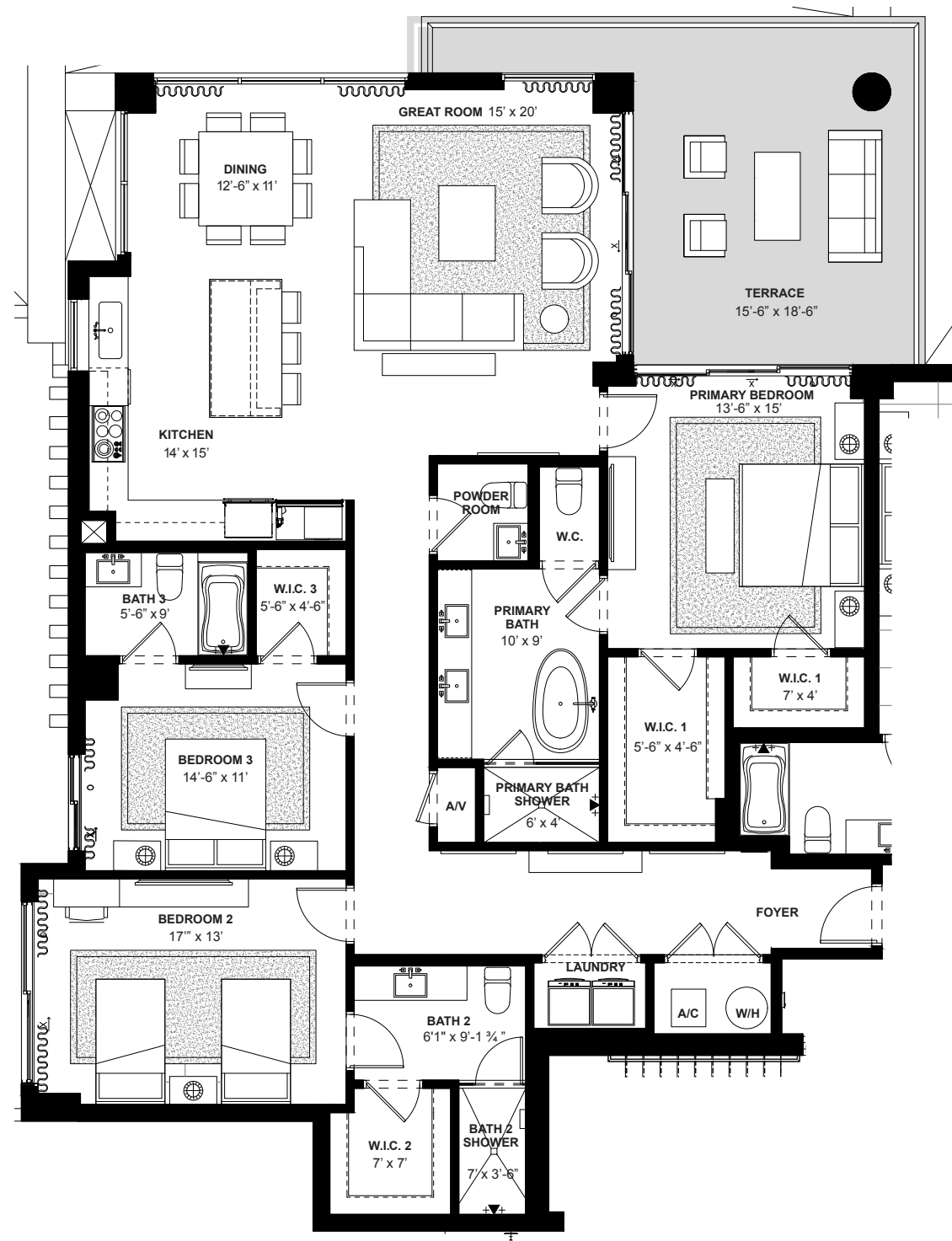
Artist's conceptual illustration only. Subject to modification.

 ORAL REPRESENTATIONS CANNOT BE RELIED UPON AS CORRECTLY STATING REPRESENTATIONS OF THE SELLER. FOR CORRECT REPRESENTATIONS, MAKE REFERENCE TO THIS BROCHURE AND TO THE DOCUMENTS REQUIRED BY SECTION 718.503, FLORIDA STATUTES TO BE FURNISHED BY A SELLER TO A BUYER OR LESSEE.

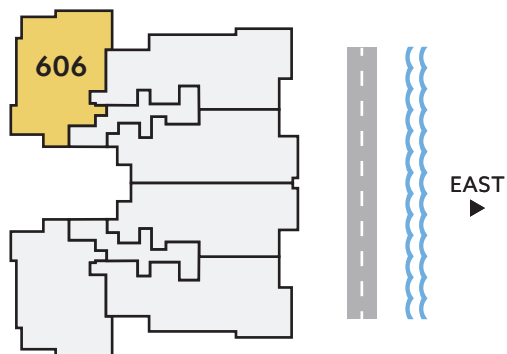
All dimensions, features, and specifications are approximate and subject to change without notice. Square footage listed above represents marketing square footage (please refer to section 3.2 of the Declaration and Exhibit 5 for more information). Brokers warmly welcomed.

SALATO
POMPANO BEACH

Residence 606



SIXTH FLOOR



**NORTH/
WEST**
DIRECTION

3
BEDROOMS

3.5
BATHS

2,106
A/C LIVING
AREA

320
COVERED
TERRACES

2,426
TOTAL S.F.

Artist's conceptual illustration only. Subject to modification.

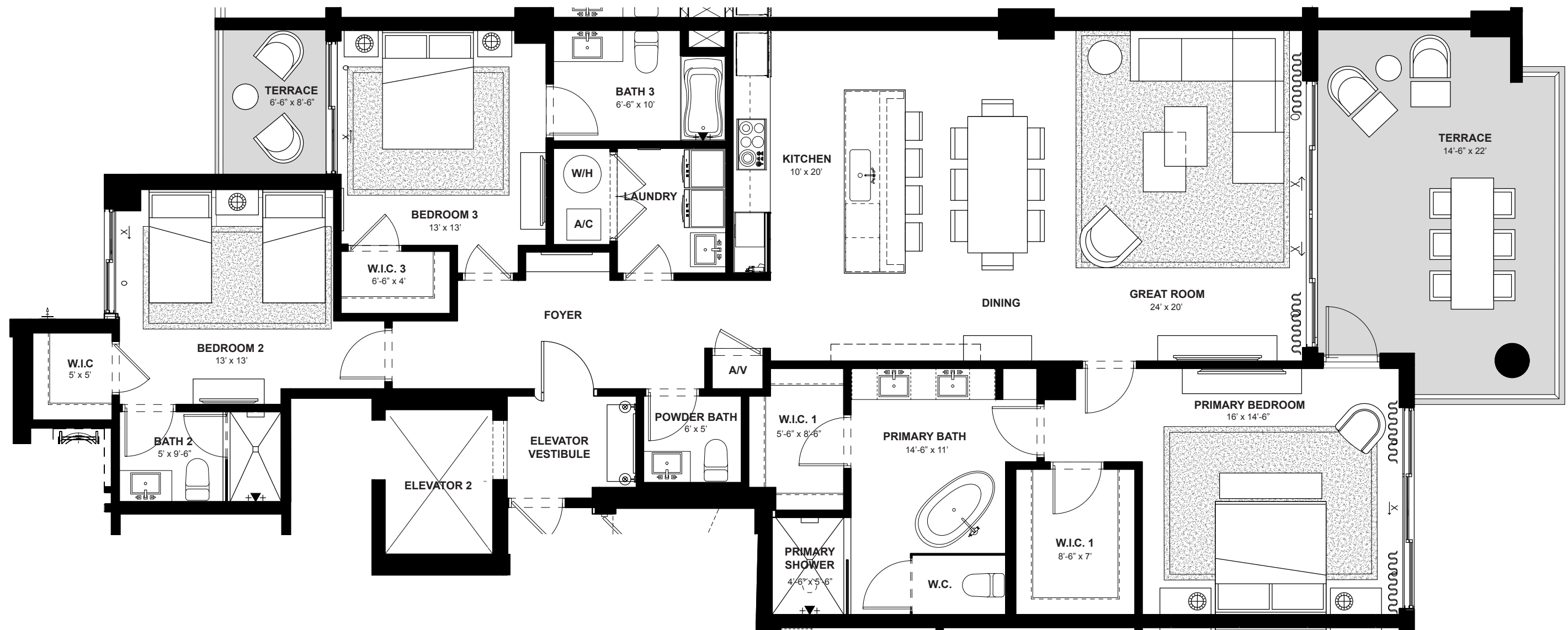


ORAL REPRESENTATIONS CANNOT BE RELIED UPON AS CORRECTLY STATING REPRESENTATIONS OF THE SELLER. FOR CORRECT REPRESENTATIONS, MAKE REFERENCE TO THIS BROCHURE AND TO THE DOCUMENTS REQUIRED BY SECTION 718.503, FLORIDA STATUTES TO BE FURNISHED BY A SELLER TO A BUYER OR LESSEE.

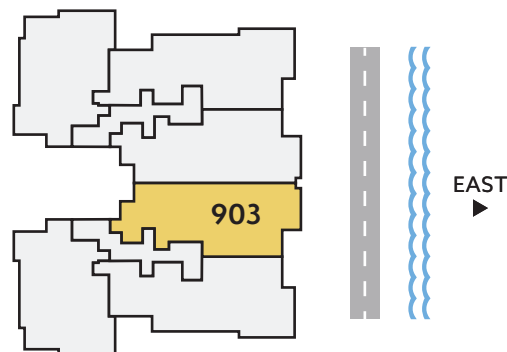
All dimensions, features, and specifications are approximate and subject to change without notice. Square footage listed above represents marketing square footage (please refer to section 3.2 of the Declaration and Exhibit 5 for more information). Brokers warmly welcomed.

SALATO
POMPANO BEACH

Residence 903




NINTH FLOOR



EAST DIRECTION	3 BEDROOMS	3.5 BATHS	2,132 A/C LIVING AREA	358 COVERED TERRACES	2,490 TOTAL S.F.
--------------------------	----------------------	---------------------	------------------------------------	-----------------------------------	----------------------------

Artist's conceptual illustration only. Subject to modification.

 ORAL REPRESENTATIONS CANNOT BE RELIED UPON AS CORRECTLY STATING REPRESENTATIONS OF THE SELLER. FOR CORRECT REPRESENTATIONS, MAKE REFERENCE TO THIS BROCHURE AND TO THE DOCUMENTS REQUIRED BY SECTION 718.503, FLORIDA STATUTES TO BE FURNISHED BY A SELLER TO A BUYER OR LESSEE.

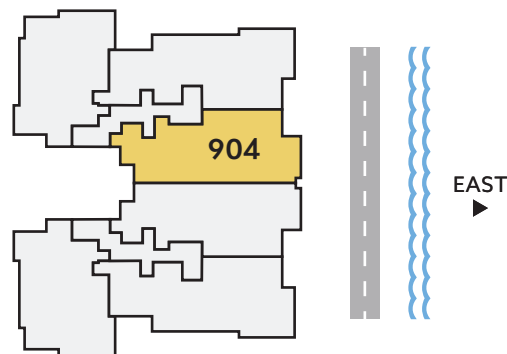
All dimensions, features, and specifications are approximate and subject to change without notice. Square footage listed above represents marketing square footage (please refer to section 3.2 of the Declaration and Exhibit 5 for more information). Brokers warmly welcomed.

SALATO
POMPANO BEACH

Residence 904




NINTH FLOOR



EAST DIRECTION	3 BEDROOMS	3.5 BATHS	2,132 A/C LIVING AREA	358 COVERED TERRACES	2,490 TOTAL S.F.
-------------------	---------------	--------------	-----------------------------	----------------------------	---------------------

Artist's conceptual illustration only. Subject to modification.

 ORAL REPRESENTATIONS CANNOT BE RELIED UPON AS CORRECTLY STATING REPRESENTATIONS OF THE SELLER. FOR CORRECT REPRESENTATIONS, MAKE REFERENCE TO THIS BROCHURE AND TO THE DOCUMENTS REQUIRED BY SECTION 718.503, FLORIDA STATUTES TO BE FURNISHED BY A SELLER TO A BUYER OR LESSEE.

All dimensions, features, and specifications are approximate and subject to change without notice. Square footage listed above represents marketing square footage (please refer to section 3.2 of the Declaration and Exhibit 5 for more information). Brokers warmly welcomed.

SALATO
POMPANO BEACH